

# Medium Network Deployment, 500–2,500 Users

Websense software can be deployed in different configurations, depending on the size and characteristics of the network, and the organization's filtering needs. Filtering components can be installed on a single machine, or distributed across multiple machines. See the *Deployment Guide* for more information about the components.

This supplement provides system and deployment recommendations a medium network (500–2,500 users). On average, medium networks have 25–125 requests per second (RPS).

Additional supplements discuss networks of other sizes:

- ◆ Small (1–500 users)
- ◆ Large (2,500–10,000 users)
- ◆ Enterprise (10,000–25,000 users)
- ◆ Very large enterprise (25,000+ users)

These network ranges are intended as general guidelines, given that the optimum deployment depends on the operating systems used, the size of the network, and the volume of Internet requests.

This manual provides system recommendations that maximize Websense component performance. You can also improve performance by using more powerful machines for resource intensive components, such as reporting.

Some components may be able to run with smaller processors or less RAM, depending on the number of users, volume of Internet requests (requests per second), and network topology.



---

## Note

Network Agent can be deployed with other filtering components or on a separate machine for improved performance. Network Agent should **not** be deployed on the same machine as response-critical components. See *Deploying Network Agent* in the *Deployment Guide*.

---

## Medium network overview

---

In a medium network, Websense components should be distributed on two or more dedicated machines. At least one machine is responsible for filtering, while a second machine runs the reporting components.

- ◆ A Windows or Linux machine can be used for the filtering components.
- ◆ Linux environments may require a dedicated Windows machine for components that are only available on Windows.



### Note

Websense, Inc., recommends using dedicated machines for some Websense components. Only the Websense components and required supporting applications are installed on the machine.

The tables in this section list possible configurations.

---

As the network grows and the amount of traffic increases, additional machines may be needed to run certain components.

On average, a medium network has between 100 and 500 requests per second. More powerful machines than the recommendations may be needed in a higher traffic, medium network.

## Windows deployment recommendations

In a Windows environment, 2 dedicated machines are recommended to run Websense software.

- ◆ [Table 1](#) provides deployment recommendations.
- ◆ [Figure 1, page 21](#), shows a Windows deployment for a medium network.

See *System Recommendations* in the *Deployment Guide* for a complete list of supported operating systems and other component requirements.

Table 1 Windows deployment (medium network)

Machine	Software	Hardware Recommendations
Dedicated Machine #1	<ul style="list-style-type: none"> <li>◆ Policy Broker</li> <li>◆ Policy Server</li> <li>◆ Filtering Service               <ul style="list-style-type: none"> <li>– Websense Master Database</li> </ul> </li> <li>◆ Network Agent<sup>1</sup></li> <li>◆ Transparent ID agent:<sup>2</sup> <ul style="list-style-type: none"> <li>– DC Agent</li> <li>– Directory Agent</li> <li>– Logon Agent</li> <li>– RADIUS Agent</li> </ul> </li> <li>◆ User Service</li> <li>◆ Usage Monitor</li> </ul>	<b>Windows</b> <ul style="list-style-type: none"> <li>◆ Quad-Core Intel Xeon processor, 2.5 GHz or greater</li> <li>◆ 2 GB RAM</li> <li>◆ 10 GB free disk space Free space must comprise at least 20% of the total disk space.</li> </ul>
Dedicated Machine #2	<ul style="list-style-type: none"> <li>◆ Websense Manager               <ul style="list-style-type: none"> <li>– Requires Internet Explorer 7 or Firefox 2</li> </ul> </li> <li>◆ Log Database<sup>3</sup></li> <li>◆ Log Server</li> <li>◆ Microsoft SQL Server 2000/2005, MSDE 2000</li> </ul>	<b>Windows</b> <ul style="list-style-type: none"> <li>◆ Quad-Core Intel Xeon processor, 2.5 GHz or greater</li> <li>◆ 4 GB RAM</li> <li>◆ 100 GB free disk space</li> </ul>

Filtering Service, the transparent identification agents, and Network Agent can be installed on multiple machines to improve processing. These additional installations do not require dedicated machines.

Table 1 Windows deployment (medium network)

Machine	Software	Hardware Recommendations
Additional Machine ( <i>optional</i> )	<ul style="list-style-type: none"> <li>Filtering Service               <ul style="list-style-type: none"> <li>Websense Master Database</li> </ul> </li> </ul>	<p>An additional machine or machines running Filtering Service may be needed, depending on the volume of Internet requests.</p> <p><b>Windows</b></p> <ul style="list-style-type: none"> <li>Quad-Core Intel Xeon processor, 2.5 GHz or greater</li> <li>2 GB RAM</li> <li>10 GB free disk space Free space must comprise at least 20% of the total disk space.</li> </ul>
Additional Machine ( <i>optional</i> )	<ul style="list-style-type: none"> <li>Network Agent<sup>1</sup></li> </ul>	<p><b>Windows</b></p> <ul style="list-style-type: none"> <li>Quad-Core Intel Xeon processor, 2.5 GHz or greater</li> <li>2 GB RAM</li> </ul>
Additional Machine ( <i>optional</i> )	<ul style="list-style-type: none"> <li>Transparent ID Agent<sup>2</sup> <ul style="list-style-type: none"> <li>DC Agent</li> <li>eDirectory Agent</li> <li>Logon Agent</li> <li>RADIUS Agent</li> </ul> </li> </ul>	<p><b>Windows</b></p> <ul style="list-style-type: none"> <li>Quad-Core Intel Xeon processor, 2.5 GHz or greater</li> <li>2 GB RAM</li> </ul>

1. Network Agent can be installed with the other filtering components, or separately on a machine in the network segment that is assigned to monitor. For more information, see *Chapter 3. Deploying Network Agent*, of the *Deployment Guide*.

2. Transparent identification agents can be deployed alone or in certain combinations. For more information, see *System Recommendations* in the *Deployment Guide*.

3. The Log Database can also be created on an existing database server.

Figure 1, page 21 illustrates the distribution of the Websense components in a medium Windows network. This drawing is not a required configuration; the components may be deployed differently or on multiple segments.

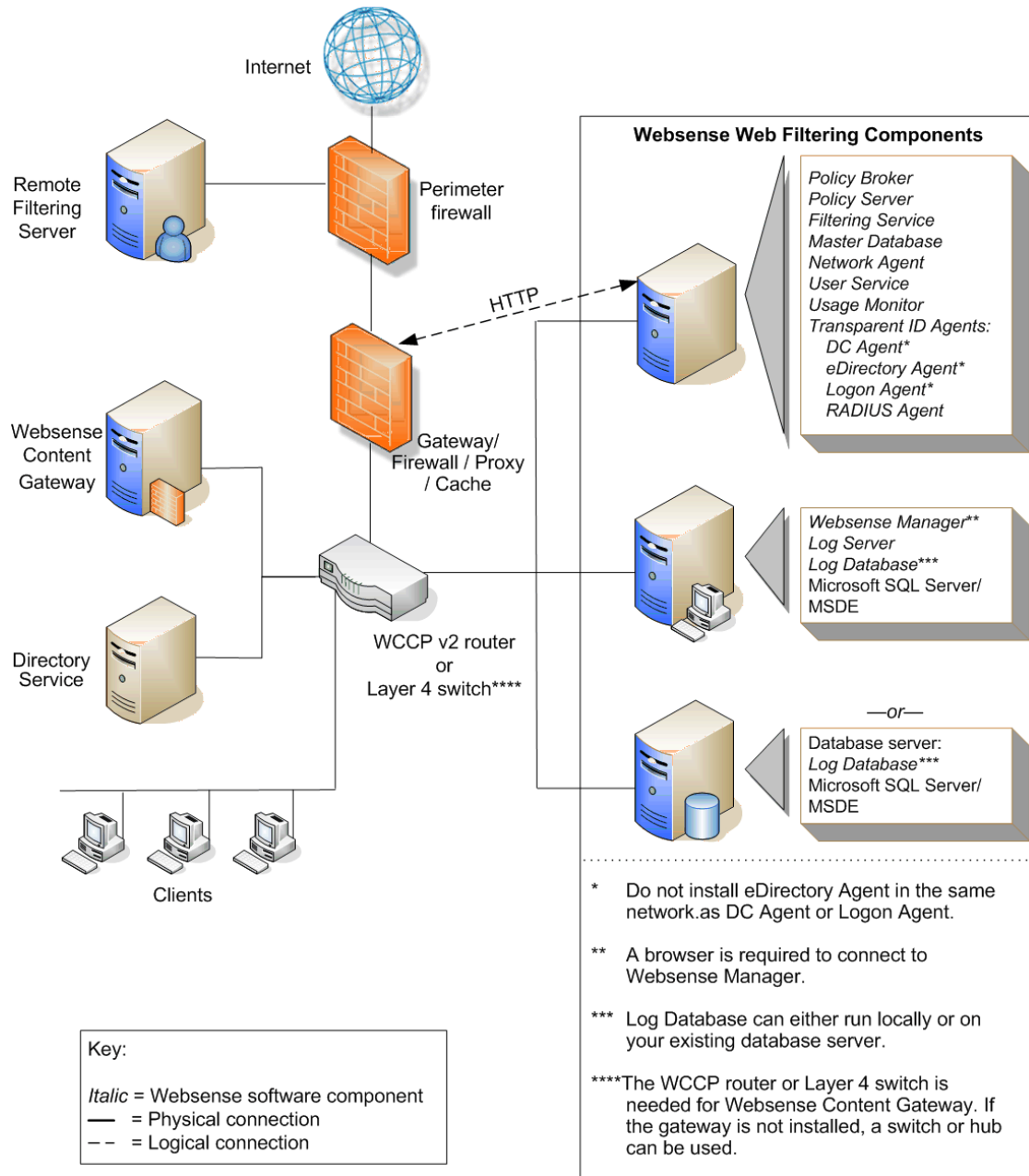


Figure 1 Overview of a Windows deployment (medium network)

## Linux deployment recommendations

Most Websense components can run on either Linux or Windows machine. Some reporting features are available only on Windows.

- ◆ [Table 2](#) provides deployment recommendations.
- ◆ [Figure 2, page 24](#), shows a Linux deployment for a medium network.

See *System Recommendations* in the *Deployment Guide* for a complete list of supported operating systems and other component requirements.

Table 2 Linux deployment (medium network)

Machine	Software	Hardware Recommendations
Dedicated Machine #1	<ul style="list-style-type: none"> <li>• Filtering Service               <ul style="list-style-type: none"> <li>– Websense Master Database</li> </ul> </li> <li>• Network Agent</li> <li>• Policy Server</li> <li>• Transparent ID agent:<sup>1</sup> <ul style="list-style-type: none"> <li>– eDirectory Agent</li> <li>– Logon Agent</li> <li>– RADIUS Agent</li> </ul> </li> <li>• User Service</li> <li>• Usage Monitor</li> <li>• Websense Manager</li> </ul>	<b>Linux</b> <ul style="list-style-type: none"> <li>• Quad-Core Intel Xeon processor, 2.5 GHz or greater</li> <li>• 2 GB RAM</li> <li>• 10 GB free disk space Free space must comprise at least 20% of the total disk space.</li> </ul>
Dedicated Machine #2 (Windows option)	<ul style="list-style-type: none"> <li>• Websense Manager               <ul style="list-style-type: none"> <li>– Requires Internet Explorer 7 or Firefox 2</li> </ul> </li> <li>• Log Database<sup>2</sup></li> <li>• Log Server</li> <li>• Microsoft SQL Server 2000/2005, MSDE 2000</li> </ul>	<b>Windows</b> <ul style="list-style-type: none"> <li>• Quad-Core Intel Xeon processor, 2.5 GHz or greater</li> <li>• 4 GB RAM</li> <li>• 100 GB free disk space</li> </ul>
Dedicated Machine #2 <sup>3</sup> (Linux option)	<ul style="list-style-type: none"> <li>• Websense Explorer for Linux               <ul style="list-style-type: none"> <li>– Requires Apache web server</li> </ul> </li> <li>• Log Server for Linux</li> <li>• Log Database<sup>2</sup></li> <li>• MySQL 5.0</li> </ul>	<b>Linux</b> <ul style="list-style-type: none"> <li>• Quad-Core Intel Xeon processor, 2.5 GHz or greater</li> <li>• 4 GB RAM</li> <li>• 100 GB free disk space</li> </ul>

Filtering Service, the transparent identification agents, and Network Agent can be installed on multiple machines to improve processing. These additional installations do not require dedicated machines.

Table 2 Linux deployment (medium network)

Machine	Software	Hardware Recommendations
Additional Machine ( <i>optional</i> )	<ul style="list-style-type: none"> <li>Filtering Service               <ul style="list-style-type: none"> <li>Websense Master Database</li> </ul> </li> </ul>	<p>An additional machine or machines running Filtering Service may be needed, depending on the volume of internet requests.</p> <p><b>Linux or Windows</b></p> <ul style="list-style-type: none"> <li>Quad-Core Intel Xeon processor, 2.5 GHz or greater</li> <li>2 GB RAM</li> <li>10 GB free disk space Free space must comprise at least 20% of the total disk space.</li> </ul>
Additional Machine ( <i>optional</i> )	<ul style="list-style-type: none"> <li>Network Agent</li> </ul>	<p><b>Linux or Windows</b></p> <ul style="list-style-type: none"> <li>Quad-Core Intel Xeon processor, 2.5 GHz or greater</li> <li>2 GB RAM</li> </ul>
Additional Machine ( <i>optional</i> )	<ul style="list-style-type: none"> <li>Transparent ID agent<sup>1</sup> <ul style="list-style-type: none"> <li>DC Agent (Windows only)</li> <li>eDirectory Agent</li> <li>Logon Agent</li> <li>RADIUS Agent</li> </ul> </li> </ul>	<p><b>Linux or Windows</b></p> <ul style="list-style-type: none"> <li>Quad-Core Intel Xeon processor, 2.5 GHz or greater</li> <li>2 GB RAM</li> </ul>

1. Transparent identification agents can be deployed alone or in certain combinations. DC Agent is deployed on a separate Windows machine only if transparent identification is needed for Windows clients via a domain controller. For more information, see *General Deployment Recommendations* in the *Deployment Guide*.

2. The Log Database can also be created on an existing database server.

3. Linux-based reporting is available using Websense Explorer for Linux. This component requires Log Server for Linux and a MySQL database (a licensed install of v4.0x or v4.1). The Linux and Windows reporting components are not cross-platform compatible.

Figure 2, page 24 shows the distribution of the Websense components in a medium Linux network. This drawing is not a required configuration; the components may be deployed differently or on multiple segments

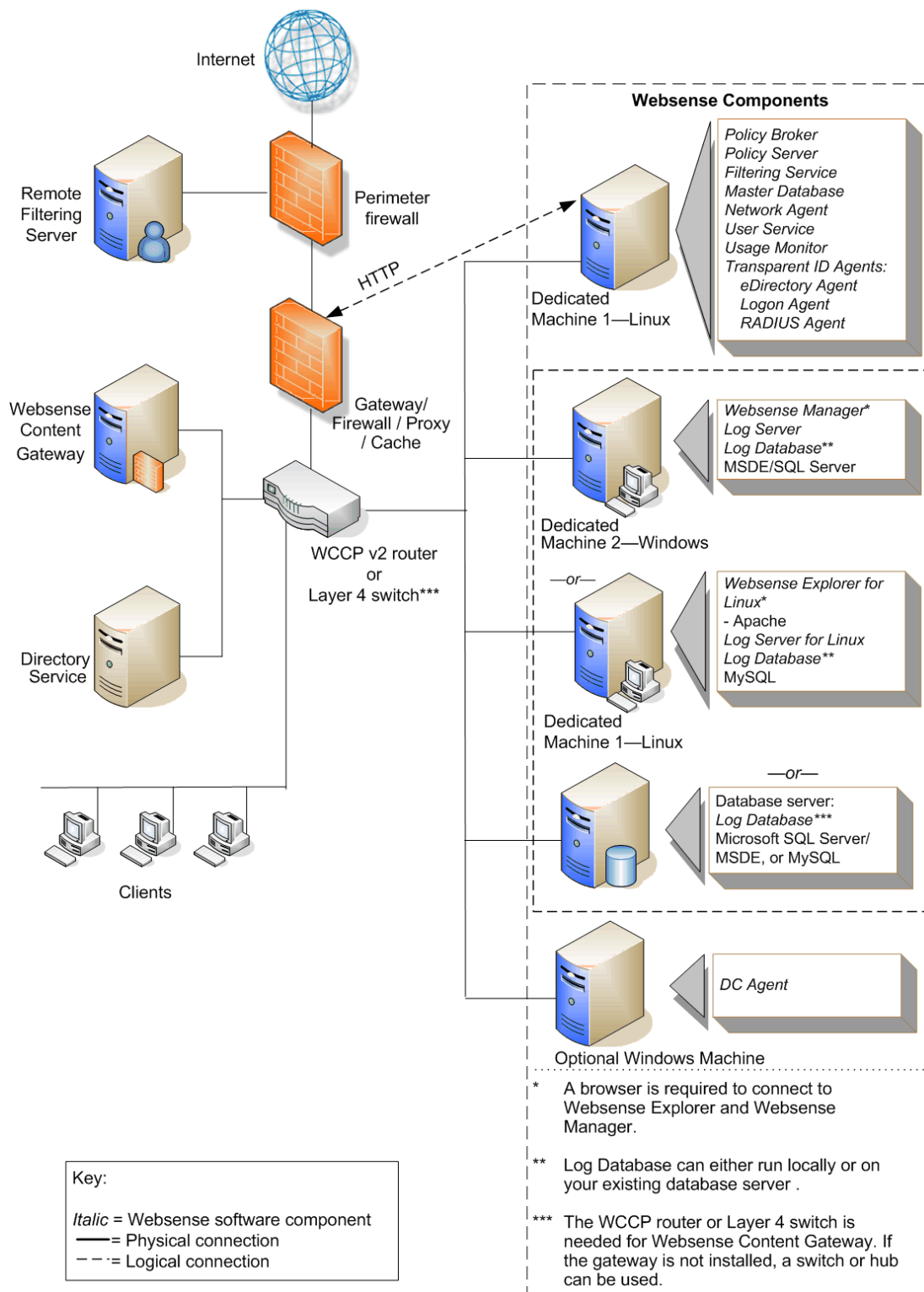


Figure 2 Overview of a Linux deployment (medium network)