

# Optional Enhanced Management Interface for i-Series Appliances and Edge Devices

TRITON AP-WEB Cloud has been updated to offer a new device management interface. The new interface provides an easier and more efficient way to manage and configure i-Series appliances and edge devices. It offers the ability to:

- Organize devices into folders for streamlined management
- Find devices via search
- Perform bulk operations to update multiple devices at the same time
- Access device details from within the Device Management page, without opening a sub-page or pop-up

Web > Device Management

## Device Management

Optimize performance On ⓘ

Search Network Devices

▼ i-Series Appliances

- APAC Region
- EMEA Region
- North America Region
- All
- Disabled
- Specific version(s)
- Unregistered
- Warnings/error status
- Specific policy

▼ Edge Devices

- All
- PSK devices
- Certificate devices
- Specific policy

Status	Name	Version
	APAC Region	
	EMEA Region	
	North America Region	
✖	HongKong-i500VM	1.3.1-2
✔	Sydney i500	1.4.0-386
⚠	Test Unregistered	N/A

**HongKong-i500VM**

General Performance

Name: HongKong-i500VM

Description: Description...

Filtering: ✔ On

Connectivity: ✖ Error

Version: ✔ 1.3.1-2

Issues: ✔ No issues reported

Registration: ✔

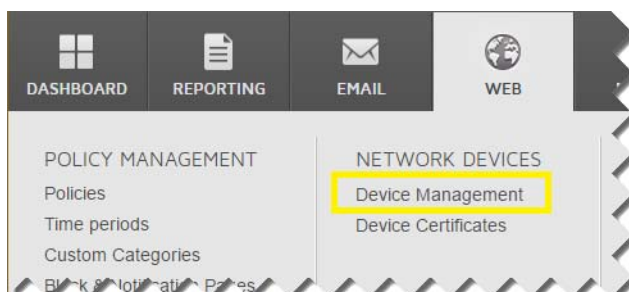
Hostname: i500.wstrain.com

Default policy: HK Demo 2

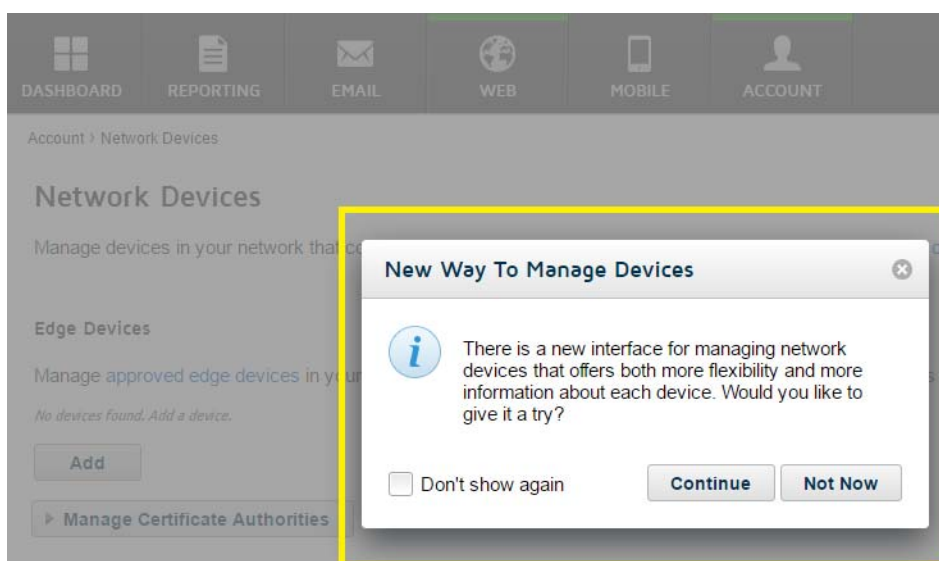
[Instructions for using the new interface](#) are available from the Documentation section of support.forcepoint.com. The Cloud TRITON Manager Help continues to provide assistance for using the old interface.

In addition, the management page has been moved to a new section in the reorganized Web menu.

- Old organization: **Web > Settings > Network Devices**
- New organization: **Web > Network Devices > Device Management**



Use of the new interface is optional. When administrators access the Device Management page, they are prompted to try the new interface, while retaining the option to use the old interface.



Administrators can toggle back and forth between the interfaces. Click **Check out the new Device Management page** at the top of the old page, or **Revert Interface** at the bottom of the new page, to switch between them.

