

Quick Start Poster

Websense® V10000 G2

TRITON® RiskVision™ Appliance



Before you begin...

Plan your deployment before setting up the appliance. See the back of this poster for a deployment overview and reference sheet.

1 Verify Contents

1 Accessory Kit



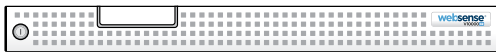
Power Cables (2)



Ethernet Cables (4)

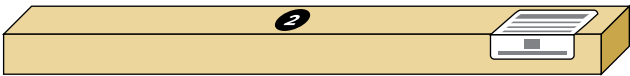


Serial Cable



Bezel (faceplate)

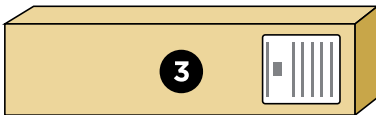
2 Sliding Ready Rail Kit



- Left Ready Rail
- Right Ready Rail
- Velcro Straps (2)
- Rack Installation Instructions



3 Cable Management Arm Kit



- Cable Management Arm
- Cable Tie Wraps
- Static Support Tray
- CMA Installation Instructions
- Status Indicator Cable



Contact Websense Technical Support if any items are missing.

2 Rack Appliance



See the **Rack Installation Instructions** included in the Sliding Ready Rail kit.

3 Security Mode

The RiskVision deployment supports the following security mode:

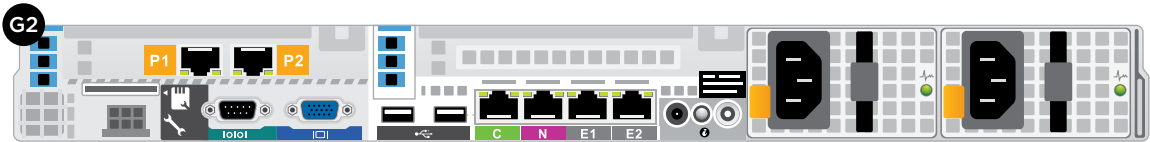
- **RiskVision**

The appliance boots into this mode automatically when you run the firstboot script in Step 7.

4 Connect Network Cables

Connect the appliance interfaces required by the security mode for this appliance. *Cat 5E cables (or better) are required. Do not use crossover network cables.*

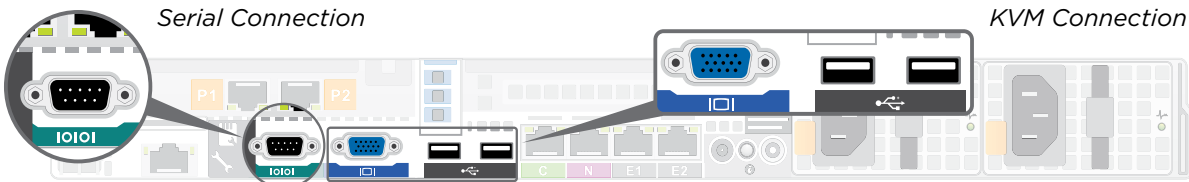
Required Ports:		
RiskVision	C	P1



Interface	Function
C	<ul style="list-style-type: none">• Provides communication for appliance modules and handles database downloads from Internet.• Receives connections from TRITON Unified Security Center.• Provides access to the Appliance manager and Content Gateway manager.
P1	<ul style="list-style-type: none">• Enables Content Gateway to passively receive Internet requests from clients and responses from web servers via a SPAN port. Re-assembles them into complete HTTP transactions.• Connects to SPAN, monitor, or mirror port on switch.
E1 E2 P2 N	<ul style="list-style-type: none">• Not used with RiskVision.

5 Connect Input Device

1. Connect to the appliance via serial port or KVM in order to access the command line interface for initial configuration. *Serial port settings are: 9600 baud, 8 bits, no parity.*



2. Secure power cables using velcro straps and plug power cables into an appropriate power source.



6 Power On Appliance

Power on the appliance and check the following indicators:

Front

- Power button is illuminated.
- Hard drive LEDs are green.

Rear

- Power supply LEDs are green.
- LEDs for connected interfaces (NICs) are green.
- System status indicator (LED left of power supplies) is solid blue.

Contact Websense Technical Support if any indicators are not illuminated correctly.

7 Configuration Overview

Please refer to the TRITON RiskVision Setup Guide for more details. See the first guide listed under RiskVision at www.websense.com/library.

Initial Configuration

Appliance Command Line (firstboot script)

- Configure Appliance Controller interface (C).

Appliance Manager

- In a browser, open the Logon Portal and log on to the Appliance manager.
- Configure NTP servers/system time.

RiskVision Mode

TRITON Unified Security Center

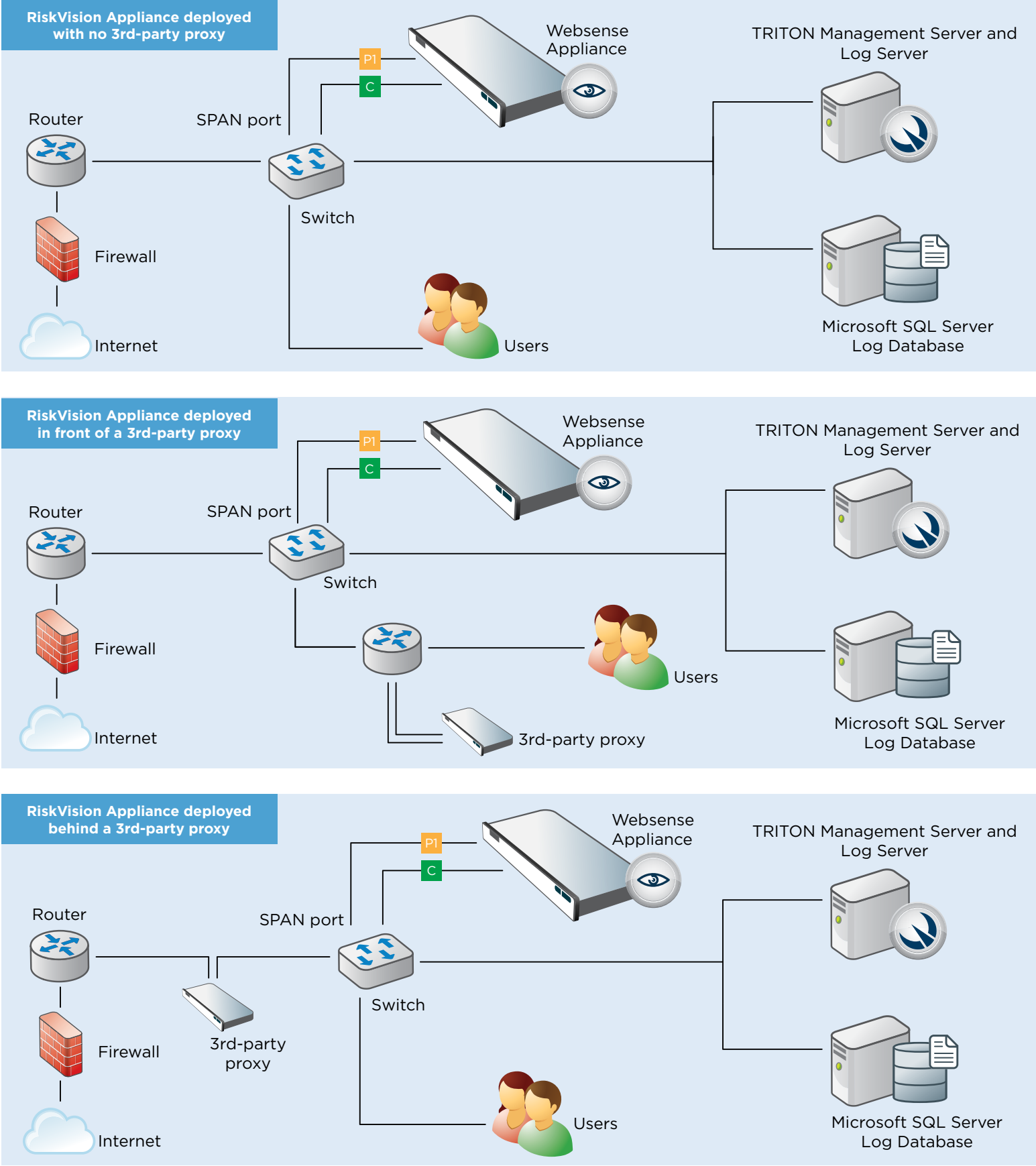
- Install on Windows Server 2008 R2 or Windows Server 2012.
- Enter license key, update Master Database, configure Network Agent, and configure policies in the RiskVision manager.

Content Gateway Manager

- Configure Content Gateway analysis

Appliance Deployment Overview

The diagrams below illustrate basic TRITON RiskVision appliance deployments. A separate Windows(R) Server 2008 R2 or Windows Server 2012 machine is required to host the TRITON management server. For more details on the deployment scenarios shown below, please see the TRITON RiskVision Setup Guide.



Support & Resources

TRITON RiskVision Setup Guide
www.websense.com/library/

Online Support and Contact Information
support.websense.com

Deployment Reference Sheet

Appliance Information

Logon Portal URL: Hostname:
admin is the default user name for Appliance manager, TRITON Unified Security Center, and Content Gateway manager.

Network Configuration

Appliance Controller Interface (C)

IP Address:	<input type="text"/>	Primary DNS:	<input type="text"/>
Subnet Mask:	<input type="text"/>	Secondary DNS:	<input type="text"/>
Default Gateway:	<input type="text"/>	Tertiary DNS:	<input type="text"/>

TRITON Unified Security Center

RiskVision

Policy Server IP:	<input type="text"/>
Log Server IP:	<input type="text"/>
License Key:	<input type="text"/>

SQL Server

IP Address:	<input type="text"/>
User Name:	<input type="text"/>
Password:	<input type="text"/>

See the TRITON RiskVision Setup Guide guide for details.