

WebSense Email Security STEMLog database schema

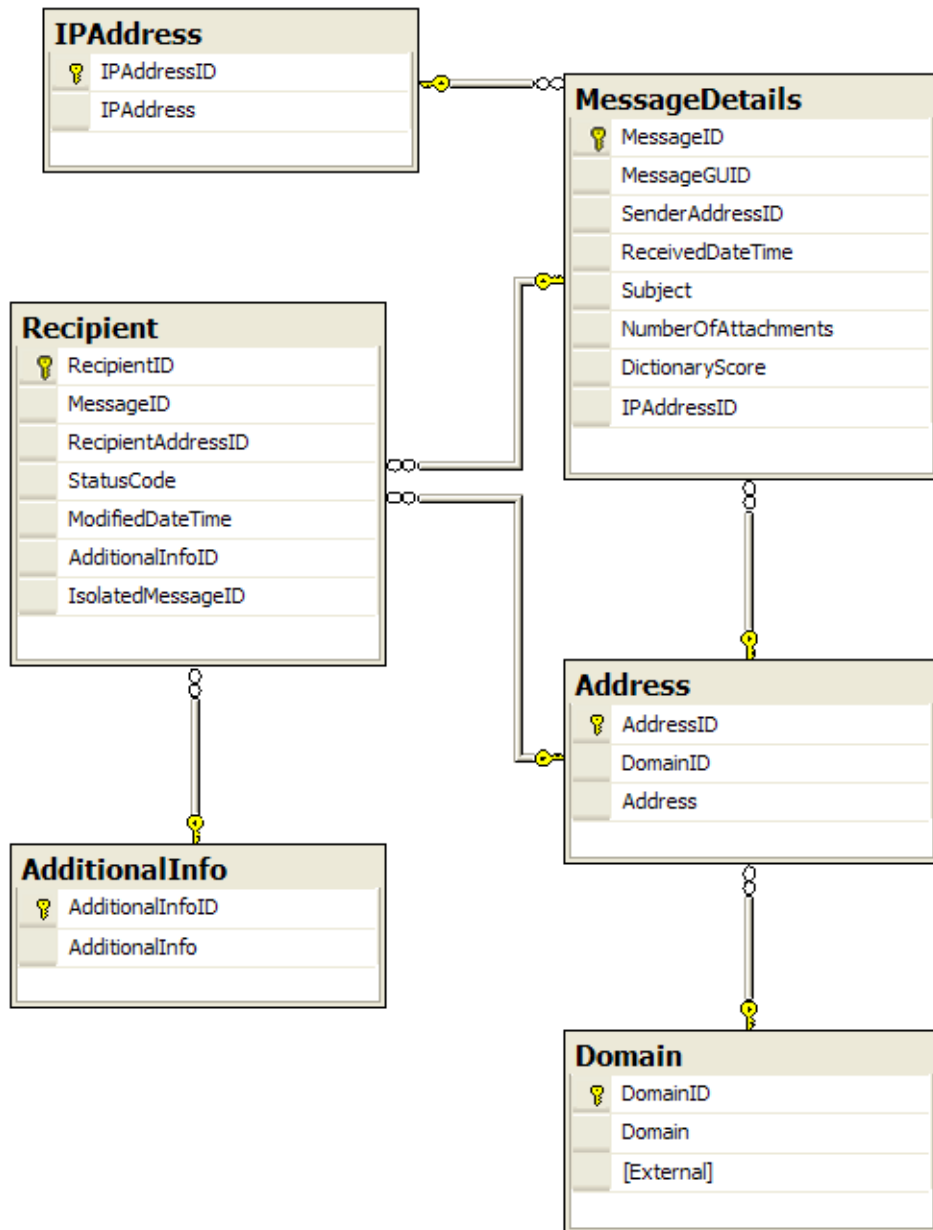
Paper 70004 / Updated: June 24, 2010

Applies to:	WebSense Email Security v7.0 and later
--------------------	--

This paper contains diagrams that show the structure and relationships between the tables in the WebSense Email Security STEMLog database. These relationships are used by the Report Central component to create reports on activity within WebSense Email Security.

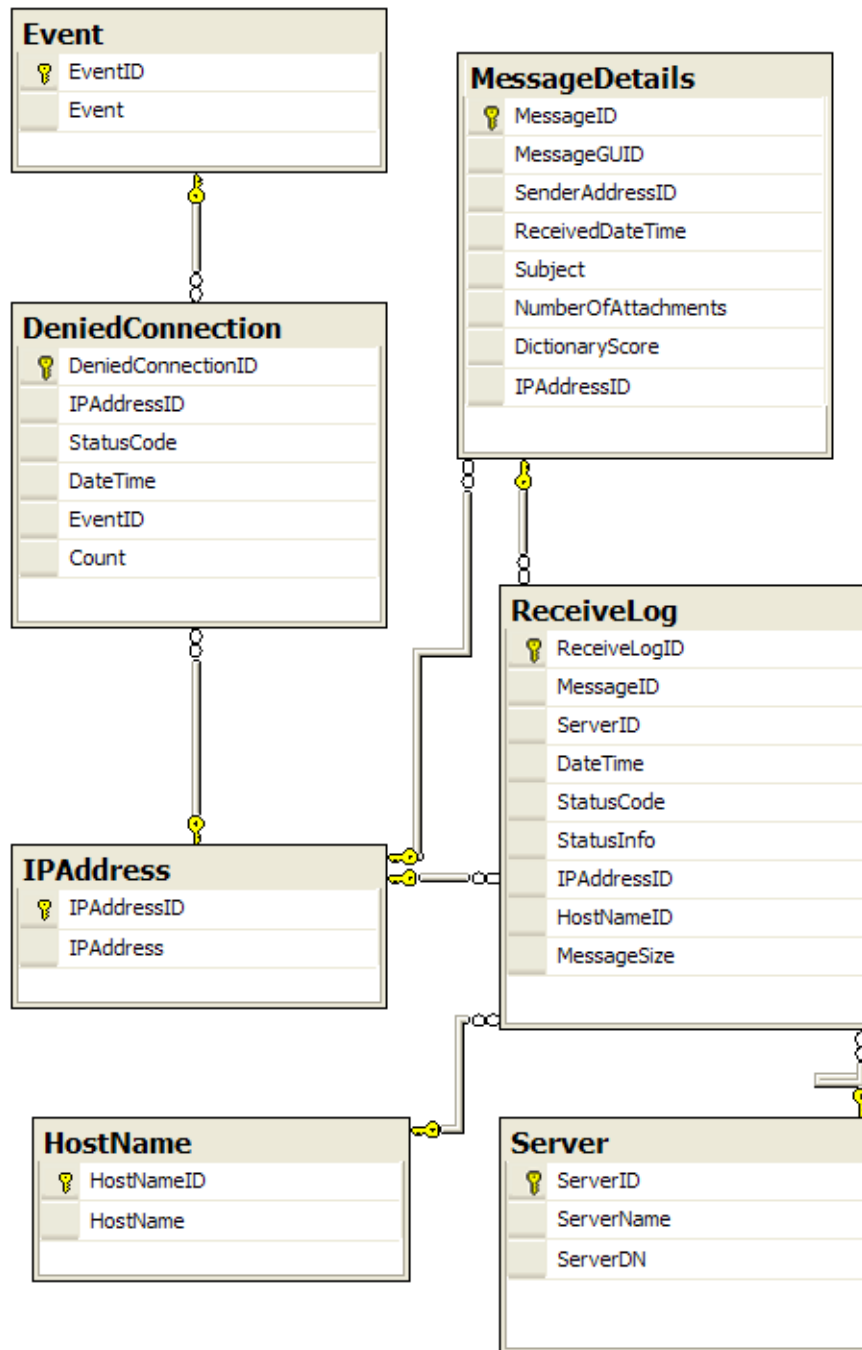
MessageDetails relationships

The following diagram illustrates the relationships among the MessageDetails tables:



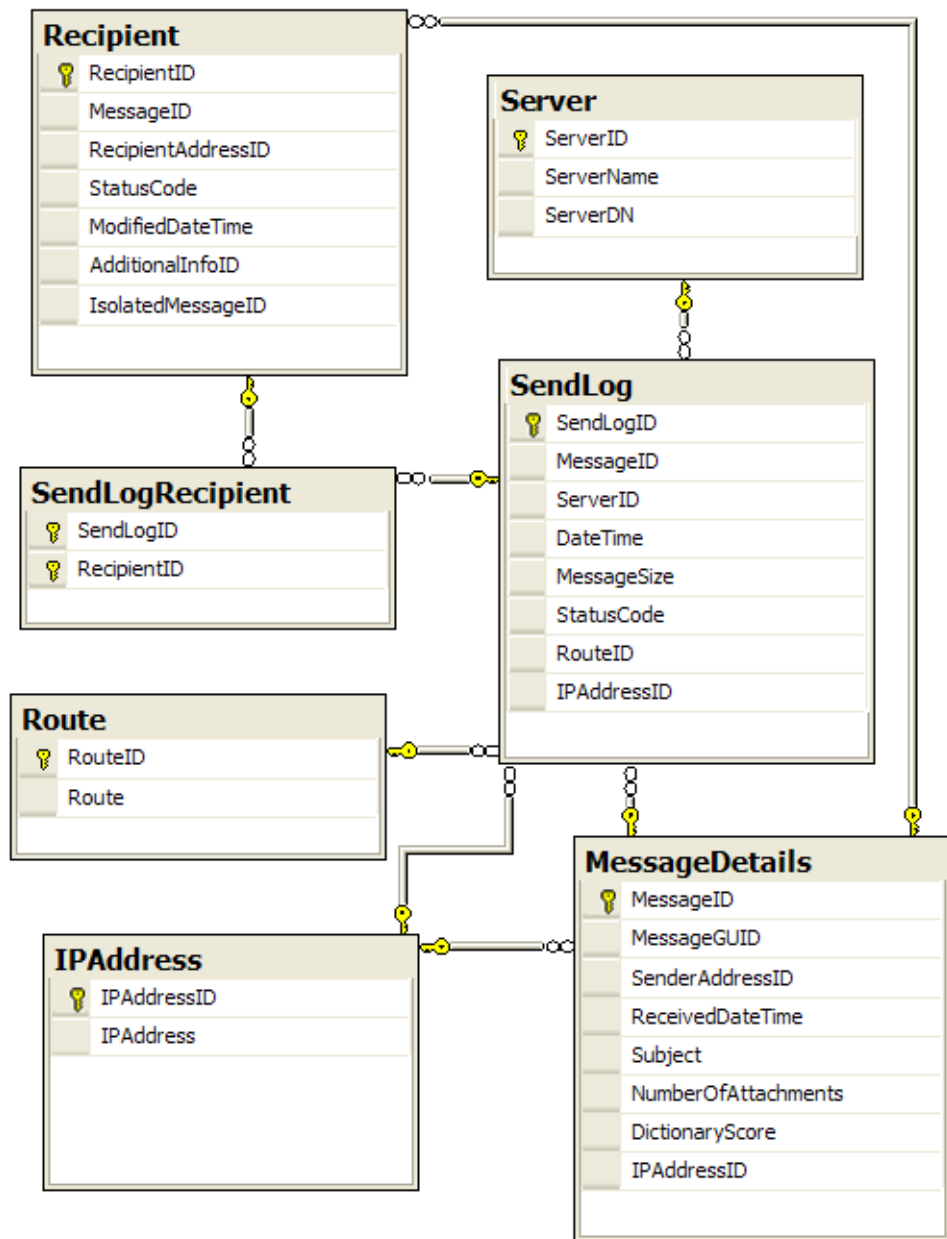
ReceiveLog and DeniedConnection relationships

The following diagram illustrates the relationships among the ReceiveLog and DeniedConnection tables:



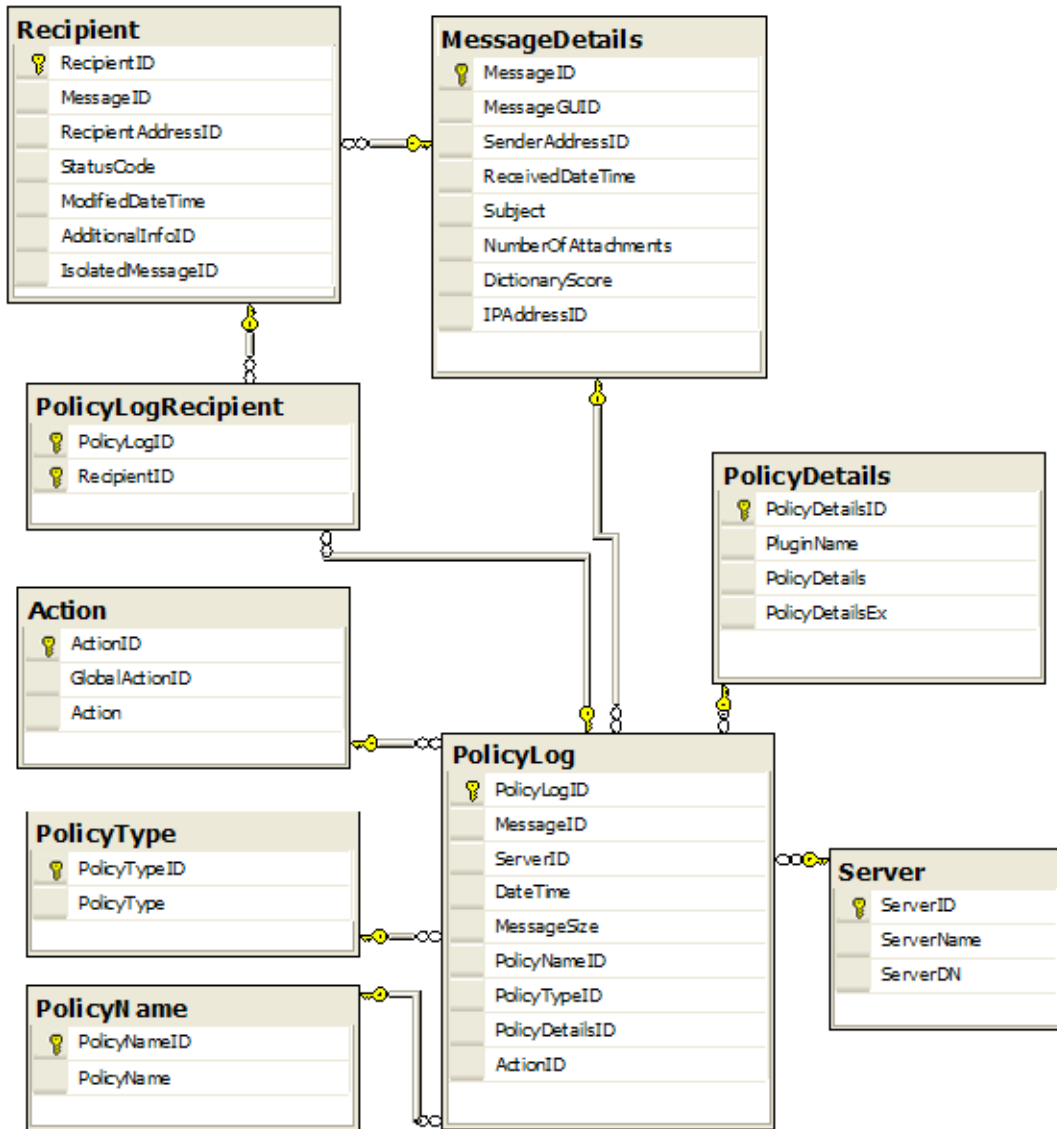
SendLog relationships

The following diagram illustrates the relationships among the SendLog tables:



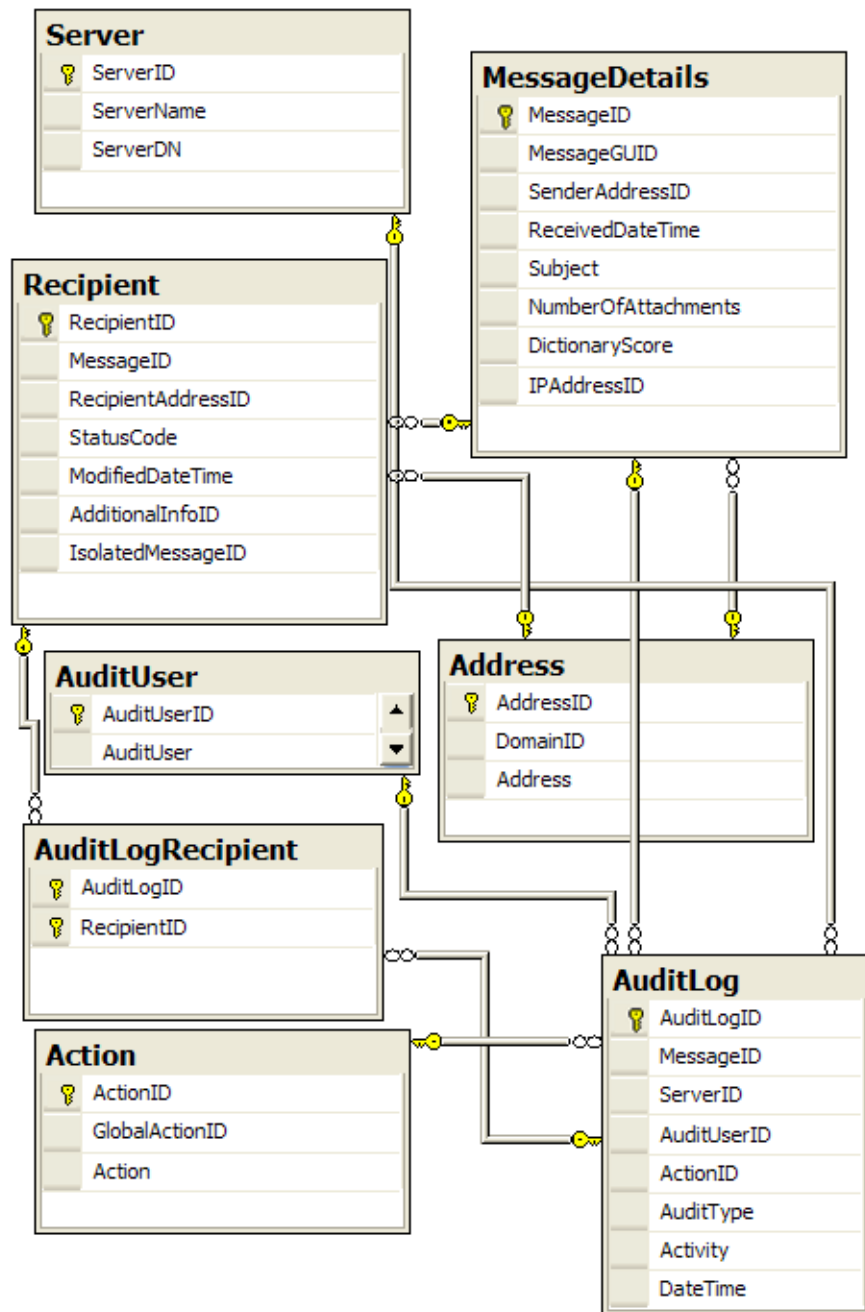
PolicyLog relationships

The following diagram illustrates the relationships among the PolicyLog tables:



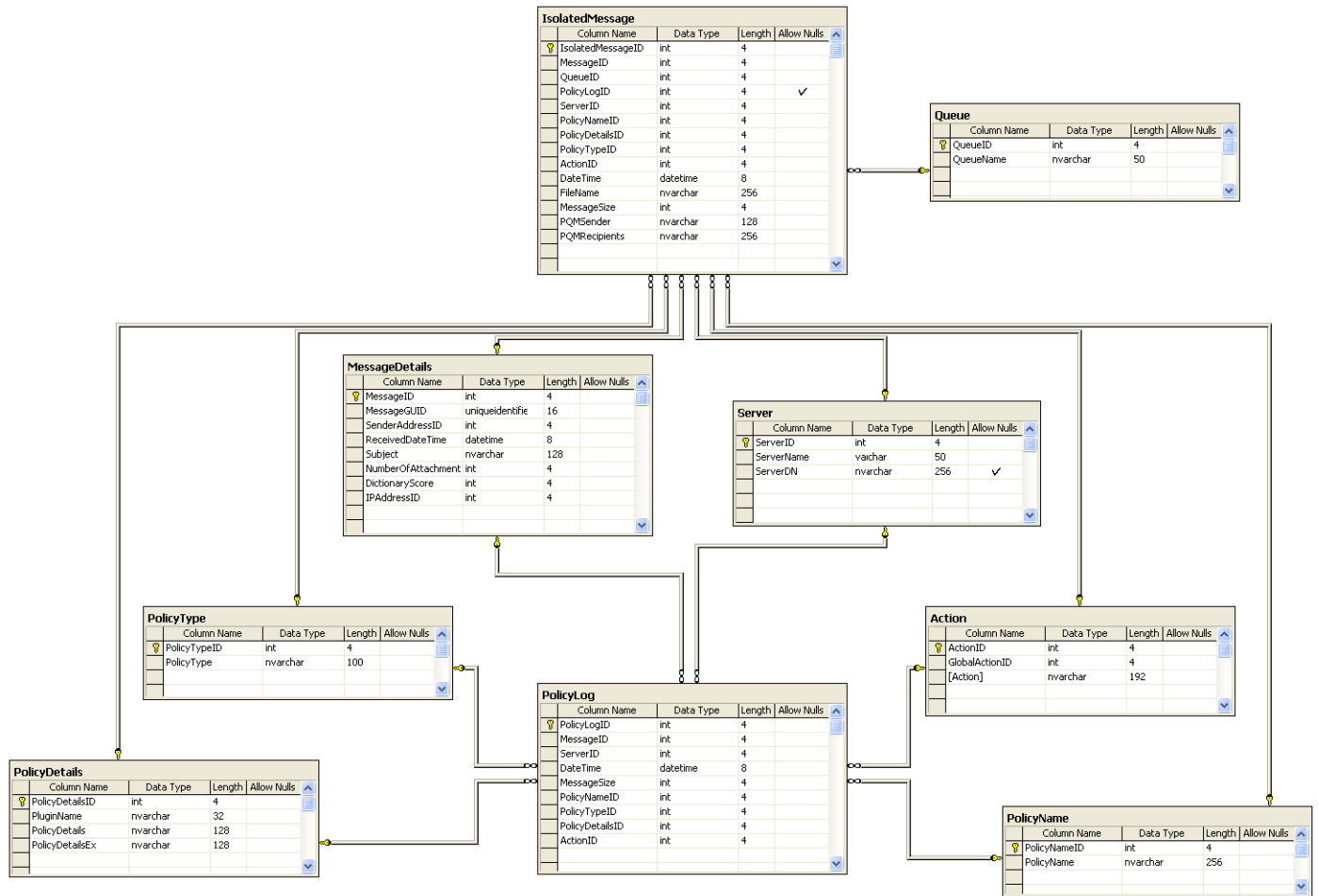
AuditLog relationships

The following diagram illustrates the relationships among the AuditLog tables:



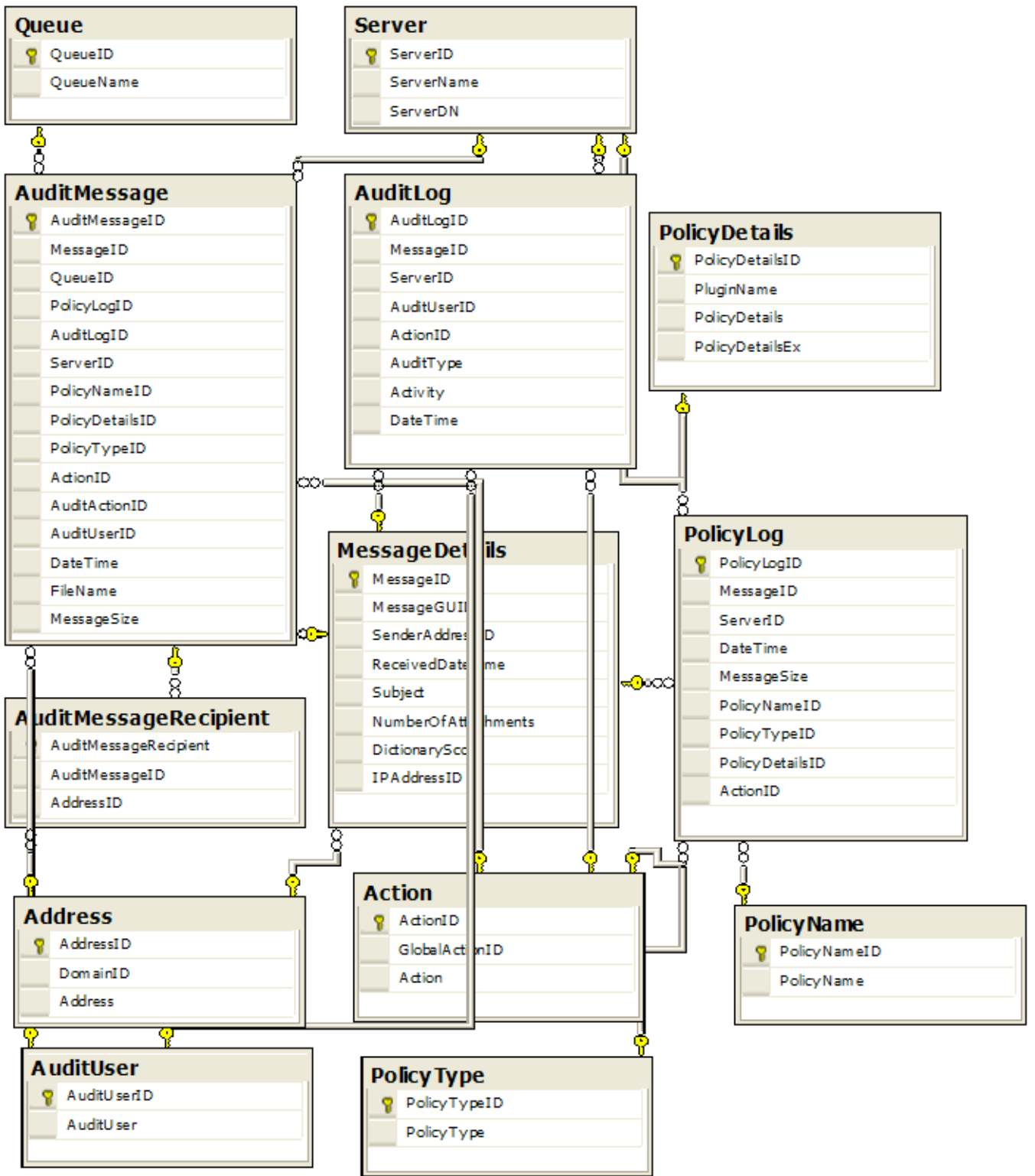
IsolatedMessage relationships

The following diagram illustrates the relationships among the IsolatedMessage tables:



AuditMessage relationships

The following diagram illustrates the relationships among the AuditMessage tables:



SystemLog relationships

The following diagram illustrates the relationships among the SystemLog tables:

