

# Quick Start Poster

## Forcepoint V5000 G4

TRITON AP-DATA Appliance (HTTP monitor only)



### Before you begin...

Install the TRITON management server and ensure it is operational.

The appliance supports the following security modes:

- Protector (can be deployed in monitoring mode)
- Mobile agent

Plan your deployment before setting up the appliance. See the back of this poster for a deployment overview and reference sheet.

## 1 Verify Contents



Power Cable



Null Modem Cable



Ethernet Cables (4)



Bezel (faceplate)

Contact Forcepoint Technical Support if any items are missing.

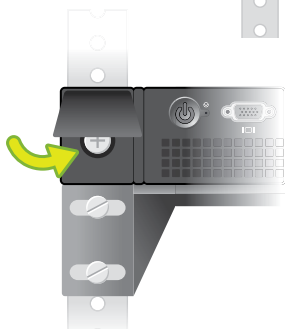
## 2 Rack Installation

To rack the V5000 appliance, use a rack tray (not included).

1. Obtain a rack tray and install into desired server rack.



2. Place appliance on tray and secure to server rack using mounting screws on front of appliance.



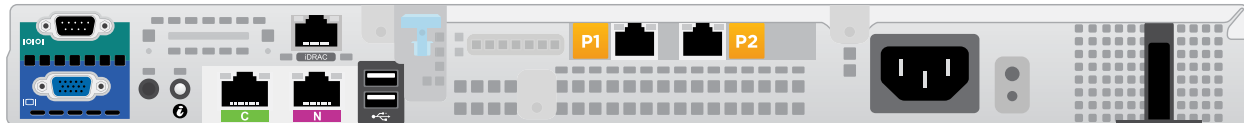
## 3 Connect Network Cables

Connect the appliance interfaces required by the security mode for this appliance. The default configuration is shown below.

**Cat 5E cables (or better) are required. Do not use crossover network cables.**

	Protector (Monitoring)	Mobile Agent
Required Ports:	C	C
Optional Ports:	P1 P2 N	P1 P2 N

Legend: C = em1 N = em2 P1 = p2p2 P2 = p2p1



Mode	Interface	Function
Protector	C	• Required. Management server port.*
	P1 P2	• Optional**. Can monitor separate networks through a TAP.
	N	• Optional**. Can monitor separate networks through a TAP.
Mobile Agent	C	• Required. Management server port.*
	P1 P2	• Optional. Can connect to separate networks (LAN, WAN, or DMZ)***.
	N	• Optional. Can connect to separate networks (LAN, WAN or DMZ)***.

\* Receives connections from the TRITON management server. Provides communication and management for the appliance.

\*\* Although these interfaces are optional, at least one must be configured.

\*\*\* Allows mobile devices to access the appliance from internal, hotspot, and home networks.

## 4 Connect Input Device & Power On

Serial Port Connection *OR* Keyboard/Monitor Connection



Connect a computer to serial port using null modem cable (provided). Or, connect a terminal server to serial port using a straight-through cable (not provided). Serial port settings are: 9600 baud, 8 bits, no parity.

Power on the appliance and check the following indicators:

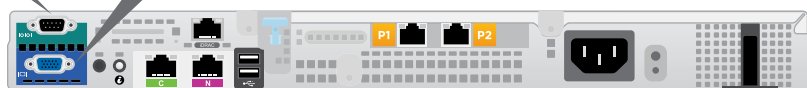
### Front

- Power button is illuminated.

### Rear

- LEDs for connected network interfaces (NICs) are green.
- System status indicator (LED left of power supplies) is solid blue.

Contact Forcepoint Technical Support if any indicators are not illuminated correctly.



Connect a monitor and keyboard to appliance, either directly or through a KVM (keyboard/video/mouse) switch.

## 5 Installation Steps

1. After the power is on, you are prompted for a user name and password.  
Enter *admin:admin* for the protector.  
Enter *root:admin* for the mobile agent.

2. Start the configuration wizard:  
An installation wizard starts automatically for the protector.  
For the mobile agent, type "wizard" and press **Enter**.

3. Follow the prompts to complete the wizard.

Please refer to the **Deployment and Installation Center** in the Forcepoint Technical Library for more details.

## 6 Getting the Latest Updates

1. Log on to My Account and navigate to the Downloads page.
2. Download the upgrade script for the latest version of the TRITON AP-DATA Protector and Mobile Agent.
3. Log on to the TRITON AP-DATA appliance as "root".
4. Copy the update script to /opt/websense/data.
5. Enter the following command:  
`chmod +x /opt/Websense/data/<protector-update-scripts-file-name>`
6. Run the following command:  
`bash /opt/websense/data/<protector-update-script-file-name>`
7. Enter **Y**, then complete the wizard, and accept the defaults.

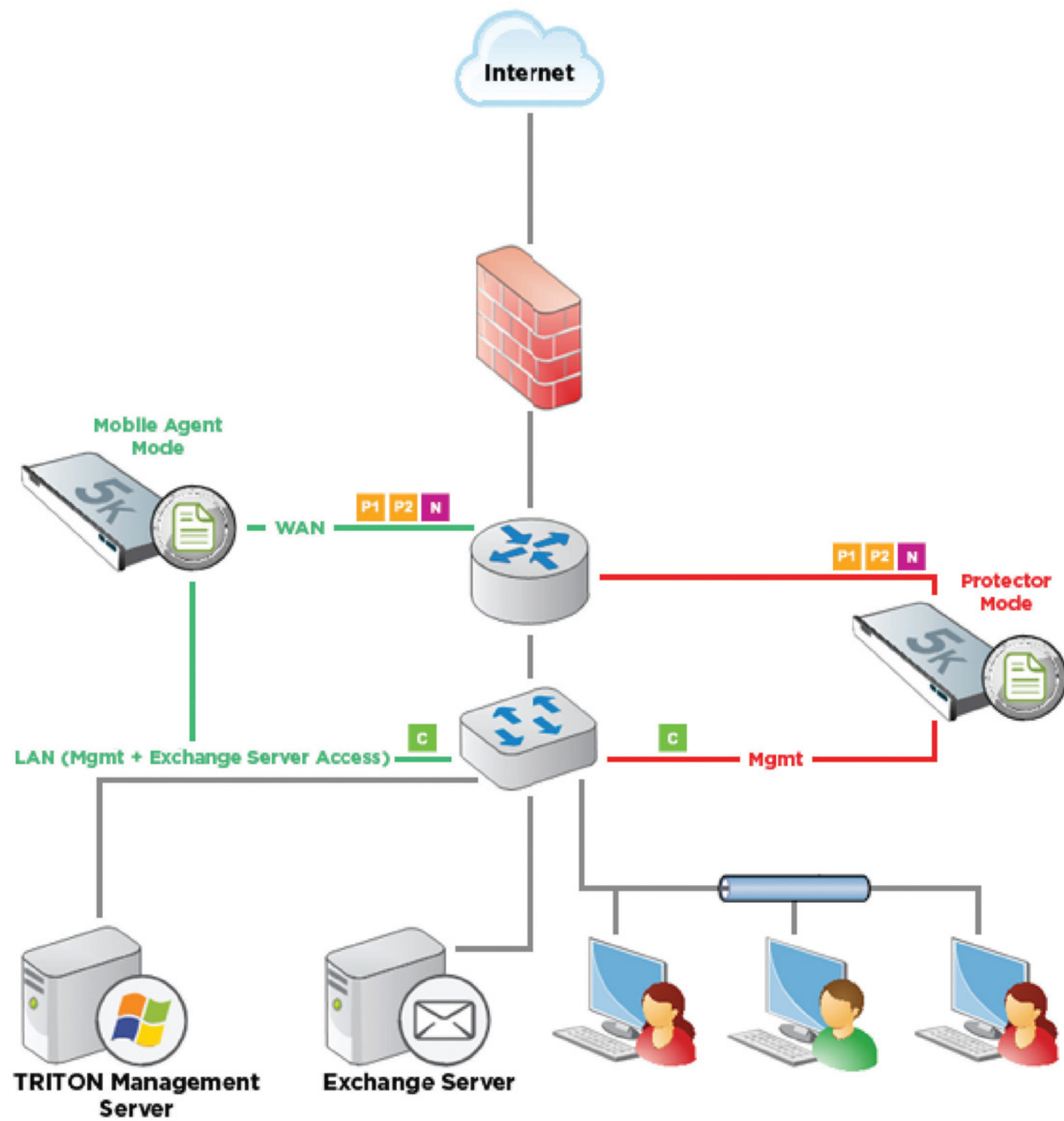
## 7 Configuration Overview

1. Open a browser..
  - a. URL= <https://<management server IP>:9443/triton>
  - b. User name = admin
  - c. Enter the password set by the administrator.
2. Select the Data tab.
3. If prompted, enter your subscription key.
4. Navigate to **Main > Status > Dashboard** or **Main > Status > Today**.  
If the Health Alert Summary lists missing essential configurations, click the link for details and set up remaining configurations.
5. Navigate to **Settings > Deployment > System Modules**.
6. Double-click the protector or mobile agent and configure it.
7. Configure Policies.
8. Click **Deploy**.

Please refer to the Data Security Manager Help system for details.

# Appliance Deployment Overview

You can deploy one or more appliances in your network. The diagram below illustrates a basic appliance deployment. Deployment modes include: Protector or Mobile Agent. A separate computer with Windows Server 2008 R2 or Windows Server 2012 or 2012 R2 is required for running the TRITON Manager. See the **Deployment and Installation Center** for details.



# Installation Reference Sheet

## Appliance Information

'root' user password:  Domain name:

'admin' password:

Host name:

*FQDN required for Mobile Agent mode.*

## Appliance NICs

Interface	Purpose	IP	Gateway	Broadcast
C		<input type="text"/>	<input type="text"/>	<input type="text"/>
		<input type="text"/>		
N		<input type="text"/>	<input type="text"/>	<input type="text"/>
		<input type="text"/>		
P1		<input type="text"/>	<input type="text"/>	<input type="text"/>
		<input type="text"/>		
P2		<input type="text"/>	<input type="text"/>	<input type="text"/>
		<input type="text"/>		

## TRITON AP-DATA Server Information (optional)

IP address or FQDN:

*Required if connecting the protector or mobile agent to a TRITON AP-DATA server. This can be the TRITON management server or a supplemental server.*

## TRITON Manager

User name (admin by default):  Password:

Subscription key:

## Support & Resources

Getting Started Guide [www.forcepoint.com](http://www.forcepoint.com)

Online Support and Contact Information [www.forcepoint.com/support/](http://www.forcepoint.com/support/)