

# READ FIRST!

## Forcepoint X10G™ Quick Start Poster

This poster describes setup steps for the X10G chassis and blade system.

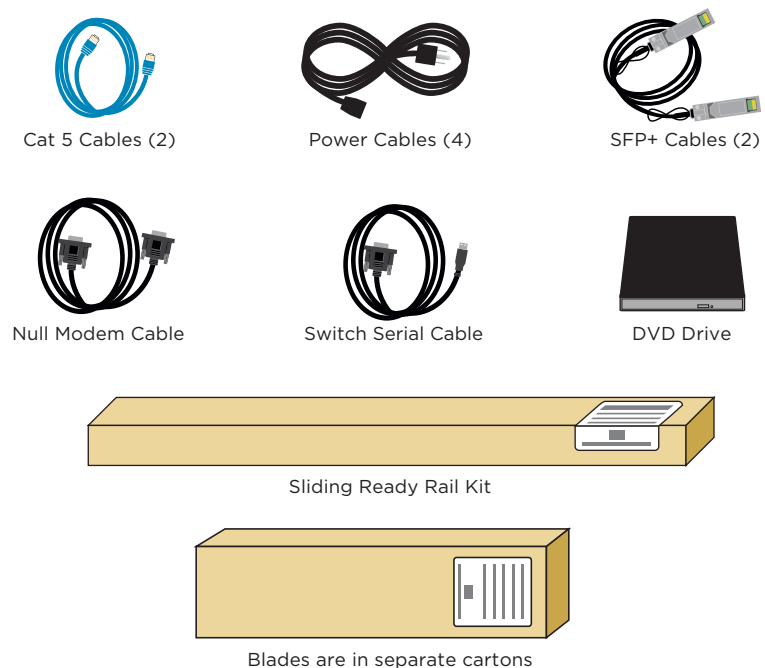
### ⚠ Before you begin

**X10G G2R2 only:** Be sure that the CMC firmware is upgraded to version 6.0 or higher before deploying the X10G G2R2 blade. See Knowledge Base article #14999 for more information.

Plan your deployment before setting up the X10G.

You can access documentation at: <http://www.forcepoint.com>

### 1 Verify Contents



Available options include:

- X10G HA Kit
- X10G Optical Kit
- X10G Mirror Port Expansion Kit

Contact your Forcepoint account representative.

Contact Forcepoint Technical Support if any items are missing.

### 2 Rack and Install

See the Rack Installation Instructions in the Sliding Ready Rail Kit.  
 Note: 4 persons required for racking chassis.

After the chassis has been racked, slide blades into the slots of the chassis starting in slot 1 (top left slot).

Note: Blades slide smoothly when hanging from the top rail. Do not force.

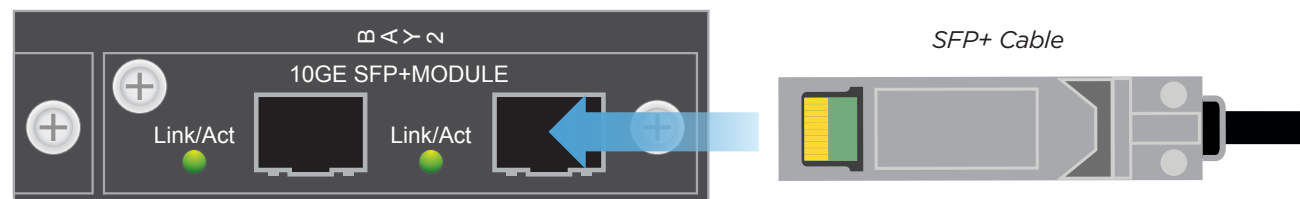
### 3 Connect to Network

#### With VLAN

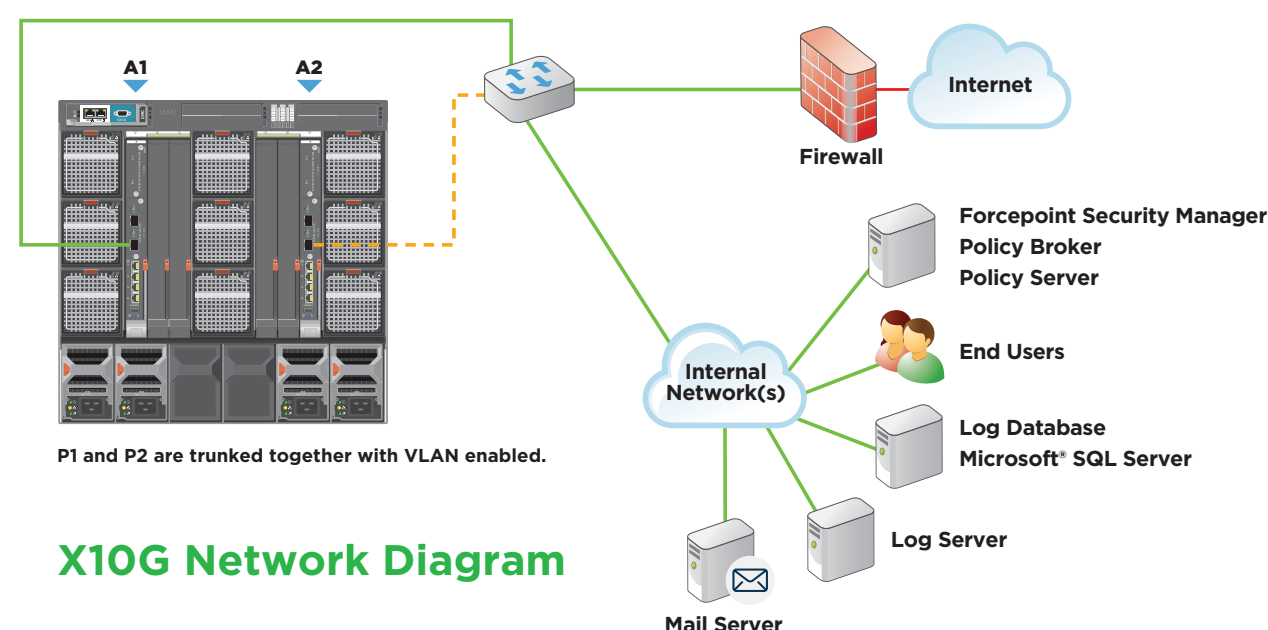
Supports switch high availability (HA) using VLAN trunking and Spanning Tree Protocol (STP).

#### Without VLAN

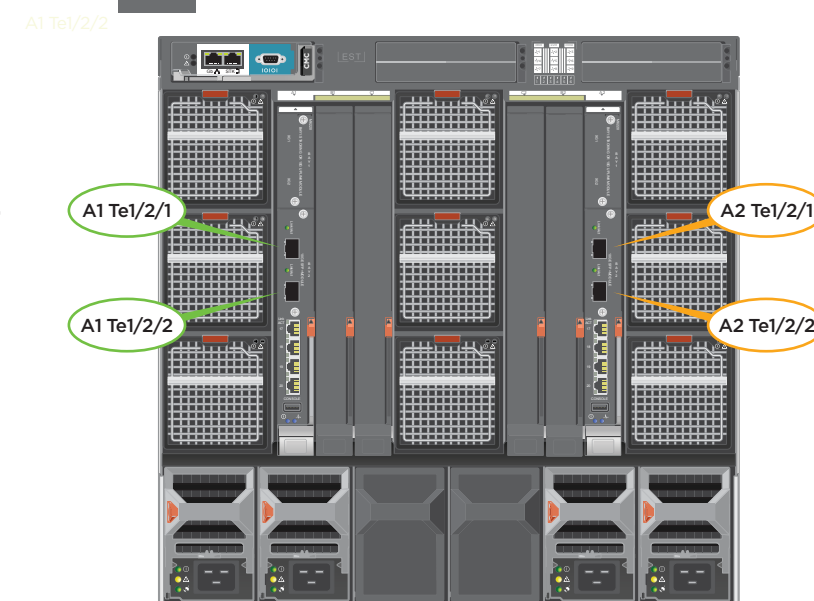
Supports switch high availability (HA) using Access Ports and Spanning Tree Protocol (STP).



Switch	With VLAN	Without VLAN
A1	A1 Te1/2/1 or Te1/2/2 10G interfaces carry blade server management and user traffic using VLAN trunking. See the X Series Switch Configuration Guide to perform initial switch configuration.	A1 Te1/2/1 or Te1/2/2 10G interfaces carry blade server management and user traffic using Access Ports. See the X Series Switch Configuration Guide to perform initial switch configuration.
A2	A2 Te1/2/1 or Te1/2/2 10G interfaces can also be used to carry blade server management and user traffic using VLAN trunking. See the X Series Switch Configuration Guide to perform initial switch configuration.	A2 Te1/2/1 or Te1/2/2 10G interfaces can also be used to carry blade server management and user traffic using Access Ports. See the X Series Switch Configuration Guide to perform initial switch configuration.



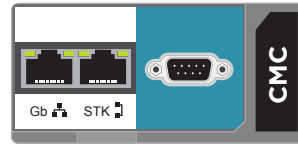
**X10G Network Diagram**



### 4 See back for steps to complete your setup

## 4 Connect Input Device

1. Connect 4 power cables to the 4 power supply units at the lower back of the chassis.
2. Connect a Cat 5 cable from the leftmost Chassis Management Controller (CMC) network port to a switch on the network for the CMC and iDRAC management IP addresses.



## 5 Power On Appliance

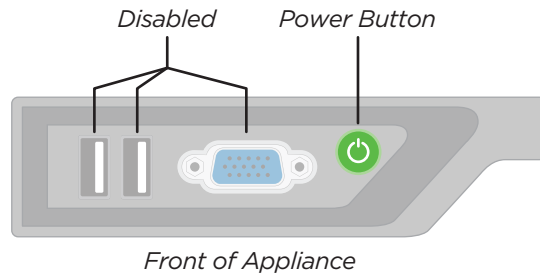
Power on the chassis at the front (lower left corner below slot), and check the following indicators:

### Front:

- Power button is illuminated.
- Hard drive LEDs are green.

### Rear:

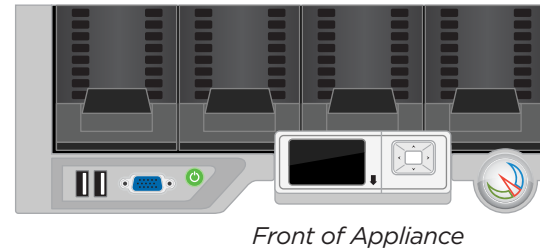
- Power supply LEDs are green.
- LEDs for both switches, the CMC, and all fans are green.



## 6 Set CMC IP Address

Use chassis LCD to configure CMC.

1. Pull out LCD screen on front of chassis.
2. Select your language preference.
3. Configure the CMC? **YES**
4. Specify the network speed. **Auto (1g)**
5. Specify the protocol type. **IPv4**
6. IP addressing mode: **Static**
7. Enter the static IP address of the Chassis Management Controller.
8. Enter the subnet mask for this IP address.
9. Enter the default gateway for this IP address.
10. Confirm your IP address settings.
11. Specify if you want to register DNS. **NO (select X)**
12. Configure iDRACs? **NO (select X)**
13. Apply all enclosure settings? **YES**



## Support and Resources

X Series™ Getting Started Guide  
[www.forcepoint.com](http://www.forcepoint.com)

Online Support and Contact Information  
[www.forcepoint.com/support/](http://www.forcepoint.com/support/)



## 7 Access the CMC

Retrieve your deployment planning worksheet with your IP addresses listed.

1. From your client PC, point an Internet Explorer browser to the IP address of the Dell CMC.
2. Log on with username: root password: Forcepoint#1
3. Select **Server Overview** in the left navigation bar.
4. Select the **Setup** tab.
5. Ensure **QuickDeploy** checkbox is enabled.
6. Set **Starting iDRAC IPv4 Address (Slot 1)** of your assigned IP address range for iDRACs.
7. Click **Save QuickDeploy Settings**.
8. Click **OK** on the popup.
9. Click **Auto-Populate Using QuickDeploy Settings**.  
*Note: Contiguous IP addresses are assigned consecutively to all 16 individual slots for iDRACs.*
10. Scroll down to verify the individual iDRACs have been set. Then click **Apply iDRAC Network Settings**.
11. Click **OK** on the popup.
12. Select **Chassis Overview** in the left navigation bar.
13. Select the **User Authentication** tab.
14. Select **User ID 1**.
15. Change the password (this password will be used for accessing the CMC iDRAC and each blade iDRAC). Click **Apply**.

## 8 Access Firstboot Configuration

During the firstboot wizard, you must select or point to the IP address of the policy source machine. Set that server up off-chassis first, or use Slot-1 for the policy source.

1. From CMC interface, select SLOT-1 and click Launch Remote Console.
2. Begin firstboot configuration wizard.
3. Repeat for each security blade, as directed in the Getting Started Guide. Follow Web or Email steps, as appropriate.

## 9 Configuration Overview

Below is an overview of remaining configuration steps for each blade. Please refer to the Getting Started Guide for more details.

### Pre-Configuration

1. Download Forcepoint Security Installer from [www.forcepoint.com](http://www.forcepoint.com).
2. Configure and launch Microsoft SQL Server 2008/2012 off-chassis.
3. Install Forcepoint Security Manager and reporting components off-chassis.

### Initial Configuration

**Forcepoint Security Manager:** Enter subscription key and customize policies.

**Content Gateway Manager:** Configure authentication and select protocols.