

Quick Start Guide

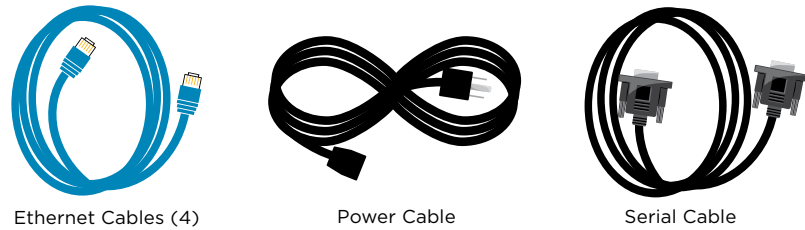
Forcepoint V5000 G4

Web & Email Protection Appliance

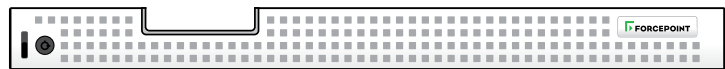
⚠ Before you begin...

Plan your deployment before setting up the appliance. See the back of this guide for a deployment overview and reference sheet.

1 Verify Contents



Ethernet Cables (4) Power Cable Serial Cable



Bezel (faceplate)

Contact Forcepoint Technical Support if any items are missing.

2 Rack Installation

To rack the V5000 appliance, use a rack tray (not included).

1. Obtain a rack tray and install into desired server rack.



2. Place appliance on tray and secure to server rack using mounting screws on front of appliance.



3 Determine Security Mode

The appliance supports the following security modes:

- **Web** (Web Filter & Security or TRITON AP-WEB)
- **Email** (TRITON AP-EMAIL)
- **Web and Email** (Web Filter & Security plus TRITON AP-EMAIL)

Based on your subscription and deployment plan, determine the appropriate security mode for this appliance.

4 Connect Network Cables

Connect the appliance interfaces required by the security mode for this appliance. Cat 5E cables (or better) are required. Do not use crossover network cables.

	Web	Email	Web and Email
Required Ports:	C P1* N	C P1	C P1 N
Optional Ports:	P2*	P2	P2

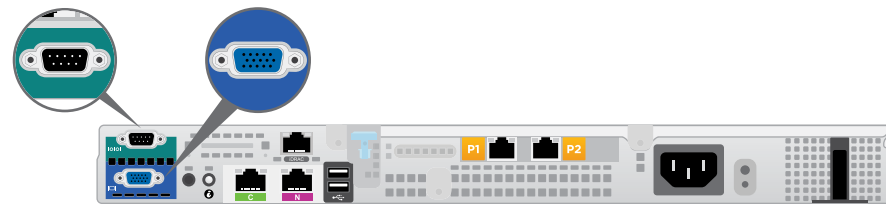
*Not used for Web Filter & Security.



Interface	Function
C	<ul style="list-style-type: none"> • Provides communication for appliance modules and handles database downloads from Internet. • Receives connections from TRITON Manager.
P1 P2	<p>Web mode:</p> <ul style="list-style-type: none"> • Enables Content Gateway proxy to receive Internet requests and communicate with Web servers. <p>Email or Web and Email mode:</p> <ul style="list-style-type: none"> • Enables TRITON AP-EMAIL to receive and send mail. • Provides personal email management and cluster communication. • Requires access to mail server.
N	<ul style="list-style-type: none"> • Allows Network Agent to monitor Internet requests. • Connect to switch port. If sending blocking information through N, connect to bidirectional span, monitor, or mirror port on switch.

5 Connect Input Device & Power On

Serial Port Connection OR Keyboard/Monitor Connection



Connect a computer to serial port using null modem cable (provided). Or, connect a terminal server to serial port using a straight-through cable (not provided). Serial port settings are: 9600 baud, 8 bits, no parity.

Connect a monitor and keyboard to appliance, either directly or through a KVM (keyboard/video/mouse) switch.

6 Power On Appliance

Power on the appliance and check the following indicators:

Front

- Power button is illuminated.

Rear

- LEDs for connected interfaces (NICs) are green.
- System status indicator (LED left of power supplies) is solid blue.

Contact Forcepoint Technical Support if any indicators are not illuminated correctly.

7 Configuration Overview

Please refer to the V-Series Appliance **Getting Started** guide for more details.

Initial Configuration

Appliance Command Line (firstboot script)

- Configure security mode.
- Configure Appliance Controller interface (C).

Appliance Manager

- Access the Appliance Manager via the Logon Portal.
- Configure NTP servers/system time.
- Configure applicable network interfaces.

Web Mode

TRITON Manager

- Enter subscription key, update Master Database, configure Network Agent, and configure policies in TRITON Manager.
- Requires Windows Server 2008 R2 or Windows Server 2012.

Content Gateway Manager (proxy)

- If your site uses the Forcepoint proxy, configure user authentication and select protocols.

Email Mode

TRITON Manager

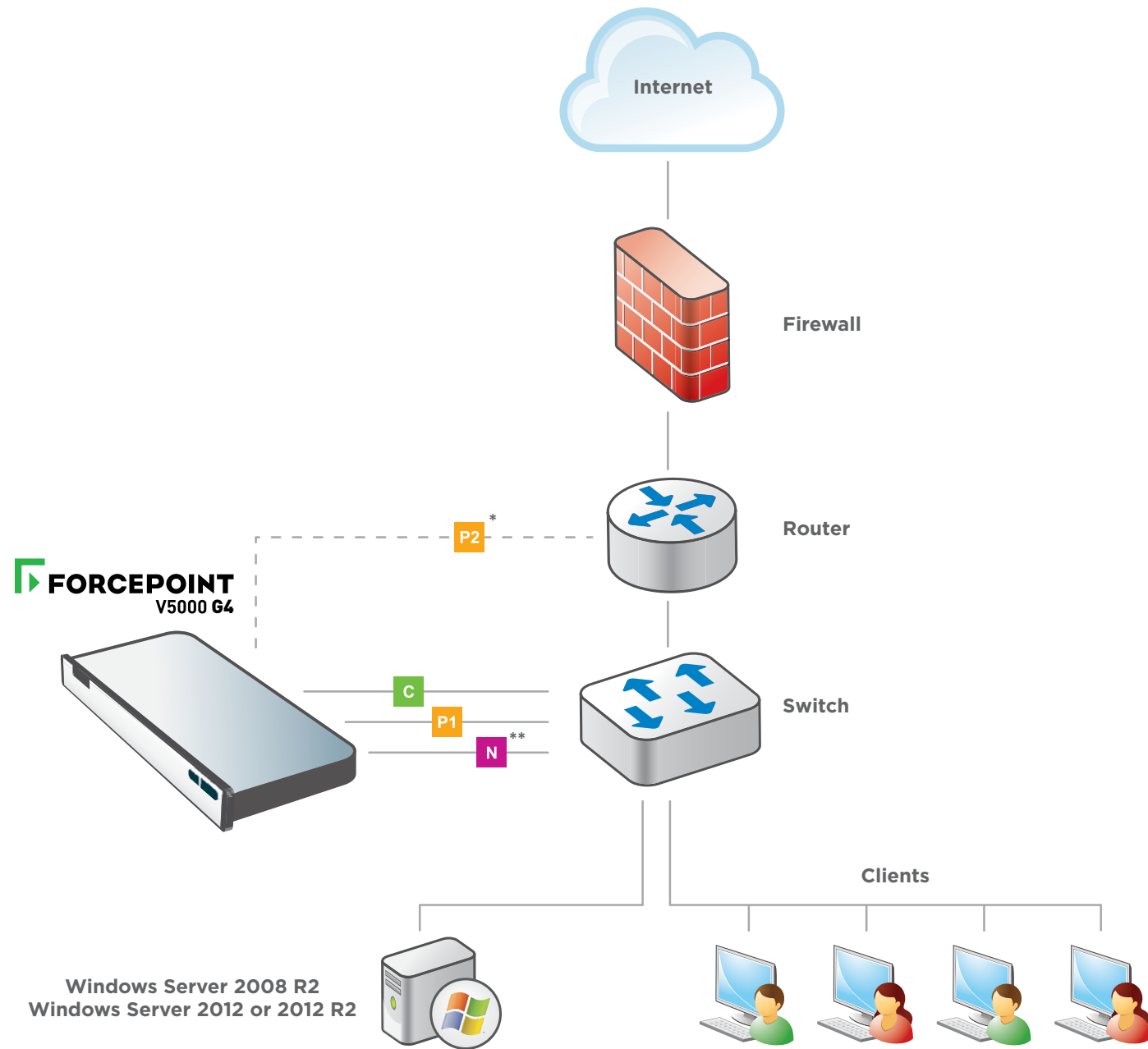
- Complete configuration wizard, enter subscription key, and configure policies in the Email module. Configure email DLP policies in the Data module.
- Requires Windows Server 2008 R2 or Windows Server 2012 or 2012 R2.

Web and Email Mode

Perform steps above for Web mode followed by Email mode, skipping the Content Gateway Manager configuration.

Appliance Deployment Overview

You can deploy one or more appliances on your network. The diagram below illustrates a basic appliance deployment. A separate computer with Windows Server® 2008 R2, Windows Server 2012 or 2012 R2 is required for running TRITON Manager. See the V-Series Appliance **Getting Started** guide for details.



* P2 is optional and may be connected to a router or switch.

** Connect the N interface to a bidirectional span, monitor, or mirror port on the switch.

Support & Resources

Getting Started Guide
www.forcepoint.com

Online Support and Contact Information
support.forcepoint.com

Deployment Reference Sheet

Appliance Information

Logon Portal URL: Hostname:

admin is the default user name for Appliance Manager, TRITON Manager, and Content Gateway Manager.

Network Configuration

Appliance Controller Interface (C)

IP Address: Primary DNS:
 Subnet Mask: Secondary DNS:
 Default Gateway: Tertiary DNS:

Content Gateway / TRITON AP-EMAIL Interfaces (P1 & P2)

P1
 IP Address: Default Gateway:
 Subnet Mask: Primary DNS:
P2
 IP Address: Secondary DNS:
 Subnet Mask: Tertiary DNS:

Above settings apply to P1 and P2

Network Agent Interface (N)

IP Address: Primary DNS:
 Subnet Mask: Secondary DNS:
 Default Gateway: Tertiary DNS:

TRITON Manager

Web
 Policy Server IP:
 Log Server IP:
 Subscription Key:

SQL Server
 IP Address:
 User Name:
 Password:

Email
 Log Server IP:
 Authentication Mode:

See the V-Series Appliance **Getting Started** guide for details.