

# Quick Start Guide

## Websense V10000 G4

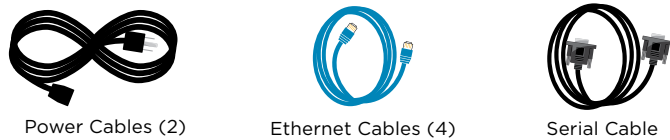
### Web & Email Security Appliance

### ⚠ Before you begin...

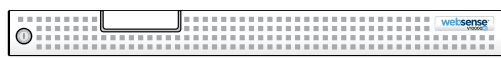
Plan your deployment before setting up the appliance. See the back of this guide for a deployment overview and reference sheet.

## 1 Verify Contents

### 1 Accessory Kit

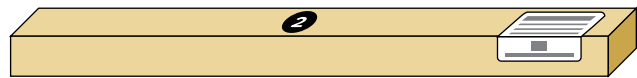


Power Cables (2)      Ethernet Cables (4)      Serial Cable



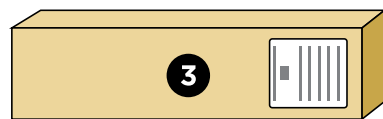
Bezel (faceplate)

### 2 Sliding Ready Rail Kit



- Left Ready Rail
- Right Ready Rail
- Velcro Straps (2)
- Rack Installation Instructions

### 3 Cable Management Arm Kit



- Cable Management Arm
- Cable Tie Wraps
- Static Support Tray
- CMA Installation Instructions
- Status Indicator Cable

Contact Websense Technical Support if any items are missing.

## 2 Rack Appliance



See the **Rack Installation Instructions** included in the Sliding Ready Rail kit.

## 3 Determine Security Mode

The appliance supports the following security modes:

- **Web** (Web Security Gateway/Anywhere)
- **Email** (Email Security Gateway/Anywhere)
- **Web and Email** (Email plus Websense Web Security or Web Security Gateway/Anywhere)

Based on your subscription and deployment plan, determine the appropriate security mode for this appliance.

## 4 Connect Network Cables

Connect the appliance interfaces required by the security mode for this appliance. *Cat 5E cables (or better) are required. Do not use crossover network cables.*

	Web	Email	Web and Email
Required Ports:	C P1 N	C E1	C P1* N E1
Optional Ports:	P2 E1 E2	E2 P1 P2	P2 E2

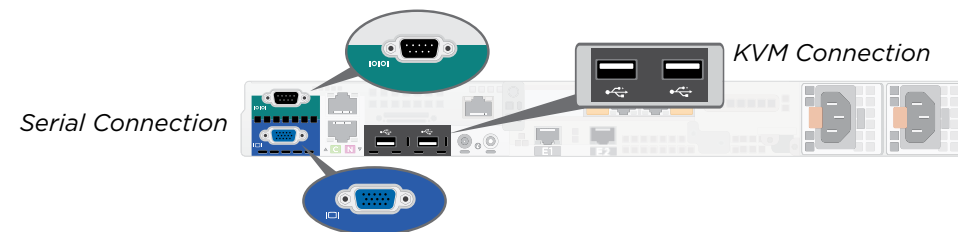
\* The P1 interface is not used for Websense Web Security in this mode



Interface	Function
C	<ul style="list-style-type: none"> <li>• Provides communication for appliance modules and handles database downloads from Internet.</li> <li>• Receives connections from TRITON Unified Security Center.</li> <li>• Provides access to the Appliance Manager, Content Gateway Manager, and the optional on-board Web Security console.</li> </ul>
P1 P2	<ul style="list-style-type: none"> <li>• Enables Web Security Gateway proxy to receive Internet requests and communicate with Web servers.</li> <li>• Optionally bonded to E1/E2 in Email mode.</li> </ul>
N	<ul style="list-style-type: none"> <li>• Allows Network Agent to monitor Internet requests.</li> <li>• Connect to switch port. If sending blocking information through N, connect to bidirectional span, monitor, or mirror port on switch.</li> </ul>
E1 E2	<ul style="list-style-type: none"> <li>• Enables Email Security Gateway to receive and send mail.</li> <li>• Provides personal email management and cluster communication.</li> <li>• Requires access to mail server.</li> <li>• Optionally bonded to P1/P2 in Web mode.</li> </ul>

## 5 Connect Input Device

1. Connect to the appliance via serial port or KVM in order to access the command line interface for initial configuration. *Serial port settings are: 9600 baud, 8 bits, no parity.*



2. Secure power cables using velcro straps and plug power cables into an appropriate power source.



## 6 Power On Appliance

Power on the appliance and check the following indicators:

### Front

- Power button is illuminated.
- Hard drive LEDs are green.

### Rear

- Power supply LEDs are green.
- LEDs for connected interfaces (NICs) are green.
- System status indicator (LED left of power supplies) is solid blue.

Contact Websense Technical Support if any indicators are not illuminated correctly.

## 7 Configuration Overview

Please refer to the V-Series Appliance **Getting Started** guide for more details.

### Initial Configuration

#### Appliance Command Line (firstboot script)

- Configure security mode.
- Configure Appliance Controller interface (C).

#### Appliance Manager

- Access the Appliance Manager via the Logon Portal.
- Configure NTP servers/system time.
- Configure applicable network interfaces.

### Web Mode

#### TRITON Unified Security Center

- Enter subscription key, update Master Database, configure Network Agent, and configure policies in TRITON - Web Security.
- Requires Windows Server 2008 R2 or Windows Server 2012.

#### Content Gateway Manager (proxy)

- Configure user authentication and select protocols.

### Email Mode

#### TRITON Unified Security Center

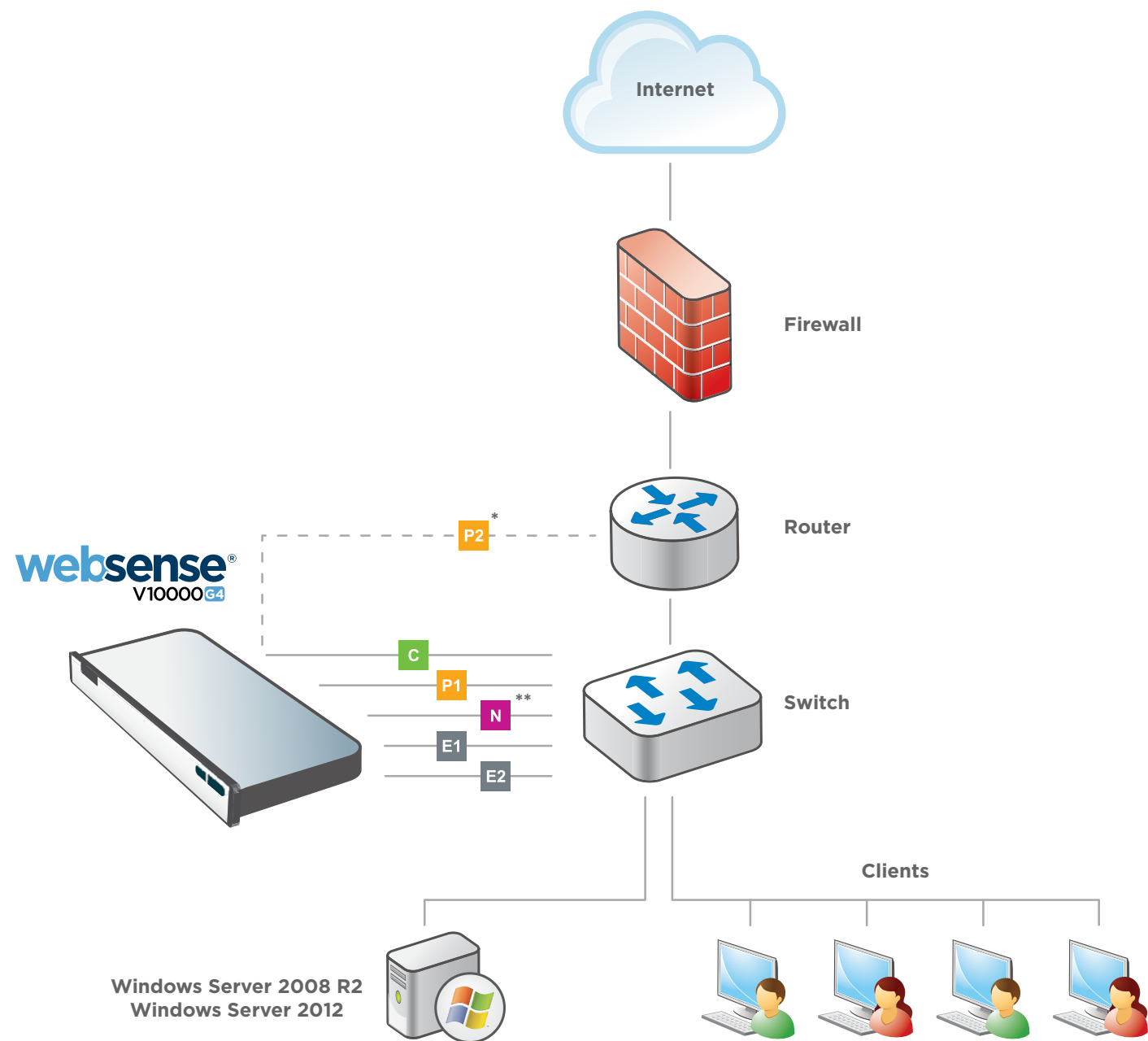
- Complete configuration wizard, enter subscription key, and configure policies in TRITON - Email Security. Configure email DLP policies in TRITON - Data Security.
- Requires Windows Server 2008 R2 or Windows Server 2012.

### Web and Email Mode

Perform steps above for Web mode followed by Email mode. If your site does not have a Websense proxy, skip the Content Gateway Manager configuration.

## Appliance Deployment Overview

You can deploy one or more appliances on your network. The diagram below illustrates a basic appliance deployment. A separate computer with Windows Server® 2008 R2 or Windows Server 2012 is required for running TRITON Unified Security Center. See the V-Series Appliance **Getting Started** guide for details.



\* P2 is optional and may be connected to a router or switch.

\*\* Connect to bidirectional span, monitor, or mirror port if sending blocking information through N.

## Support & Resources

Getting Started Guide  
[www.websense.com/library/](http://www.websense.com/library/)

Online Support and Contact Information  
[support.websense.com](http://support.websense.com)

## Deployment Reference Sheet

### Appliance Information

Logon Portal URL:  Hostname:

**admin** is the default user name for Appliance Manager, TRITON Unified Security Center, and Content Gateway Manager.

### Network Configuration

#### Appliance Controller Interface (C)

IP Address:  Primary DNS:   
 Subnet Mask:  Secondary DNS:   
 Default Gateway:  Tertiary DNS:

#### Websense Content Gateway Interfaces (P1 & P2)

**P1**  
 IP Address:  Default Gateway:   
 Subnet Mask:  Primary DNS:   
**P2**  
 IP Address:  Secondary DNS:   
 Subnet Mask:  Tertiary DNS:

*Above settings apply to P1 and P2*

#### Network Agent Interface (N)

IP Address:  Primary DNS:   
 Subnet Mask:  Secondary DNS:   
 Default Gateway:  Tertiary DNS:

#### Email Security Gateway Interfaces (E1 & E2)

**E1**  
 IP Address:  Default Gateway:   
 Subnet Mask:  Primary DNS:   
**E2**  
 IP Address:  Secondary DNS:   
 Subnet Mask:  Tertiary DNS:

*Above settings apply to E1 and E2*

### TRITON Unified Security Center

#### Web Security

Policy Server IP:   
 Log Server IP:   
 Subscription Key:

#### SQL Server

IP Address:   
 User Name:   
 Password:

#### Email Security

Log Server IP:   
 Authentication Mode:

See the V-Series Appliance **Getting Started** guide for details.