

# Quick Start Guide

## WebSense V5000 G2

### Web Security

#### ⚠ Before you begin...

Plan your deployment before setting up the appliance. See the back of this guide for a deployment overview and reference sheet.

## 1 Verify Contents

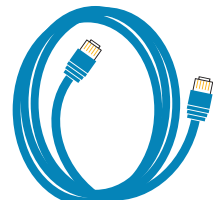
### Accessory Kit



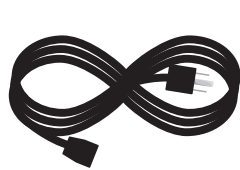
Recovery Disk



Documentation Disk



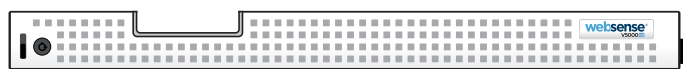
Ethernet Cables (4)



Power Cable



Null Modem Cable



Bezel (faceplate)

## 2 Rack Installation

To rack the V5000 G2 appliance, use a rack tray (not included).

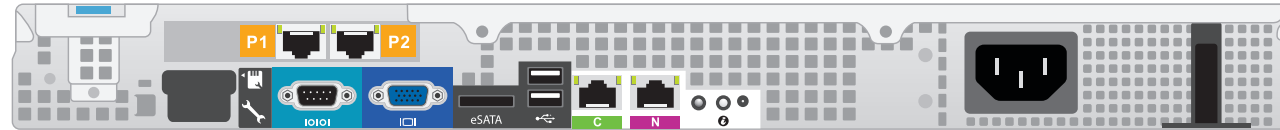
- Obtain a rack tray and install into desired server rack.



- Place appliance on tray and secure to server rack using mounting screws on front of appliance.



## 3 Connect Network Cables

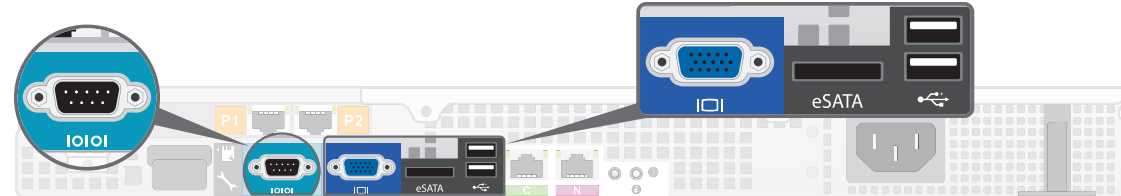


Port	Connects to	Function
C	Any port on switch or router	Provides communication for Websense Web Security modules and handles database downloads from the Internet.
P1	N/A	Reserved for future expansion.
P2	N/A	Reserved for future expansion.
N	Span, monitor, or mirror port on switch	Allows Network Agent to monitor all Internet requests.

Cat 5E cables (or better) are required. Do not use crossover network cables.

## 4 Connect Input Device

### Serial Port Connection OR Keyboard/Monitor Connection



Connect a computer to serial port using null modem cable (provided). Or, connect a terminal server to serial port using a straight-through cable (not provided).

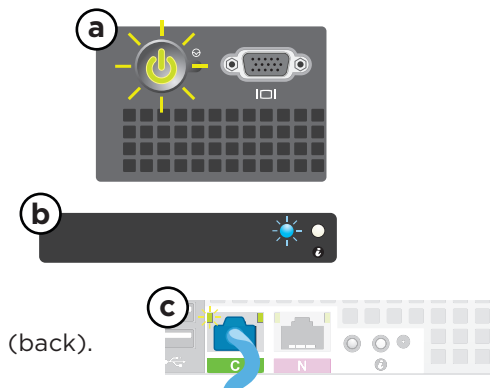
Serial port settings: 9600 baud, 8 bits, no parity

Connect a monitor and keyboard to appliance, either directly or through a KVM (keyboard/video/mouse) switch.

## 5 Power On Appliance

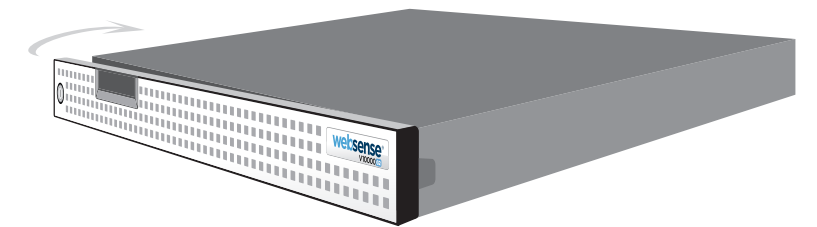
- Plug power cable into an appropriate power source.
- Press power button on front of appliance (a).
- Check the following indicators:

- Power button is illuminated (front).
- System status indicator is solid blue (front).
- LEDs for connected interfaces (NICs) are illuminated (back).



Contact Websense Technical Support if any indicators are not illuminated correctly.

## 6 Install Bezel (optional)



- Insert right tab into slot on appliance.
- Press left tab in firmly until bezel snaps into place.
- Appliance can be locked using keys included with bezel. (optional)

## 7 Configuration Overview

- Appliance Command Line:** Configure the integration method and Appliance Controller interface (C) via firstboot script.
- Logon Portal:** Access Logon Portal via browser to perform remaining tasks.
- Appliance Manager:** Configure NTP servers/system time, Network Agent interface (N), and all other necessary settings.
- TRITON™ - Web Security:** Enter subscription key, update Master URL Database, configure Network Agent and customize policies. *Windows Server® 2003/2008 required for Log Server and optional components.*

See the **V5000 G2 Web Security Getting Started** guide online for detailed instructions.

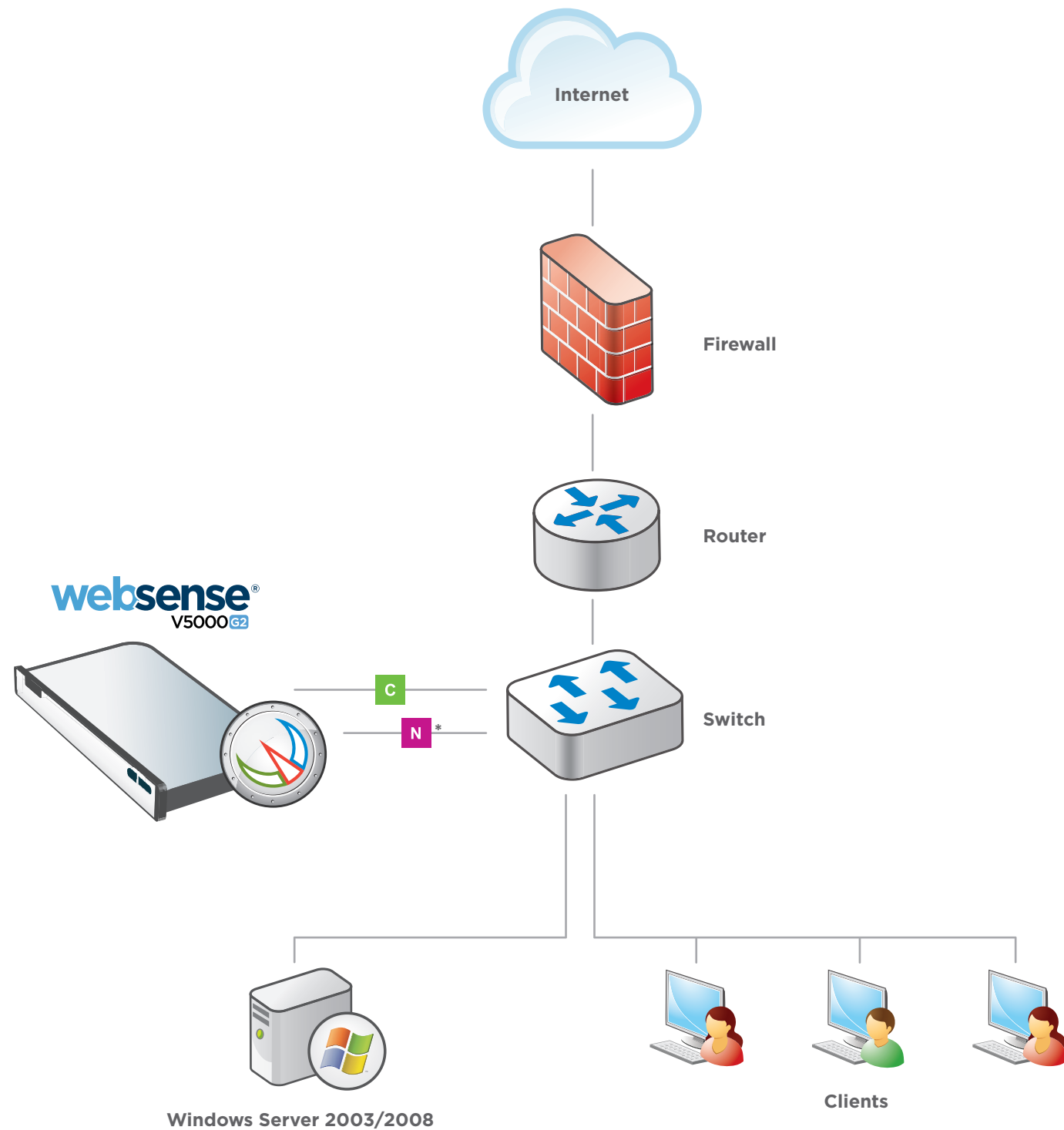
## Support & Resources

**Getting Started Guide**  
[www.websense.com/library/](http://www.websense.com/library/)  
 Also available on the Documentation disk.

**Online Support and Contact Information**  
[www.websense.com/support/](http://www.websense.com/support/)

## Appliance Deployment Overview

You can deploy one or more appliances on your network. The diagram below illustrates a basic appliance deployment. A separate computer with Windows Server® 2003/2008 is required for running Log Server and Microsoft SQL Server®. See the **Getting Started** guide for details.



\* Connect the N interface to a span, monitor, or mirror port on the switch.

## Deployment Reference Sheet

### Network Configuration

Hostname:

**Appliance Controller Interface (C)**

IP Address:  Primary DNS:

Subnet Mask:  Secondary DNS:

Default Gateway:  Tertiary DNS:

**Network Agent Interface (N)**

IP Address:  Primary DNS:

Subnet Mask:  Secondary DNS:

Default Gateway:  Tertiary DNS:

### Logon Information

Logon Portal URL:  *C interface IP Address*

#### Default User Names

Appliance Manager: **admin**

TRITON - Web Security: **WebsenseAdministrator**

*Unified password is set during firstboot script.*

### Additional Components

Policy Server IP:

Log Server IP:

Subscription Key:

#### SQL Server

IP Address:

User Name:

Password: