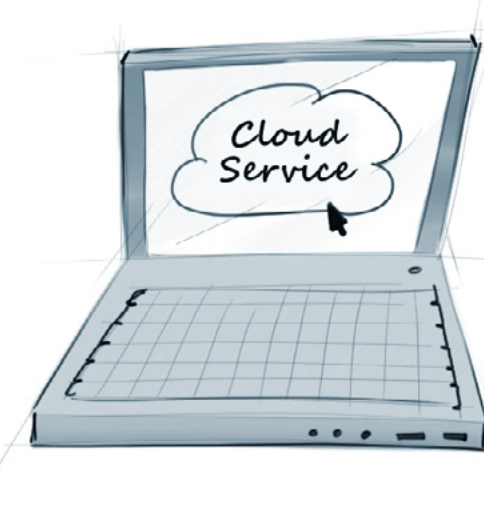


Quick Start Guide Forcepoint i-Series Appliance (not applicable to the i-Series virtual appliance) Web Protection Appliance

⚠ Before you begin...

- Determine appliance rack location.
- Determine appliance IP addresses for network deployment.
- If you plan to use Active Directory authentication, see the Help topic titled [System information](#) or the [Getting Started Guide](#) for appliance hostname requirements.
- The appliance ships with a pre-installed Web category database. After appliance registration, an update to this database is initiated. During this update, the appliance can analyze traffic using the pre-installed database. Note that traffic analysis may be more accurate after the update is complete.
- For networks with a firewall, open destination UDP port 123 and select the appropriate TCP ports to open for cloud communication: standard (80, 443) or alternative (8081, 8002, 80, 443). See the [Getting Started Guide](#) for details.
- If you plan to control VLAN traffic in your network, see the [Getting Started Guide](#) for information about VLAN tags.

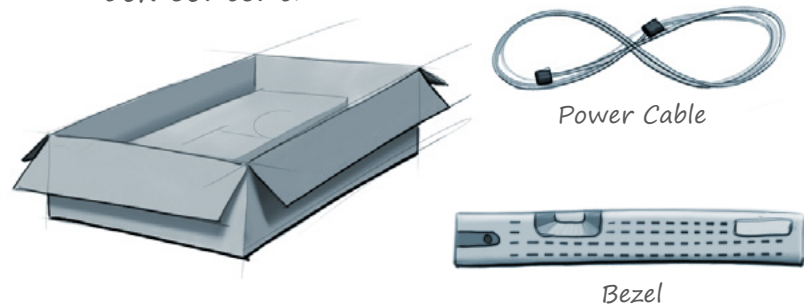
1 Initial Forcepoint Cloud Service Settings



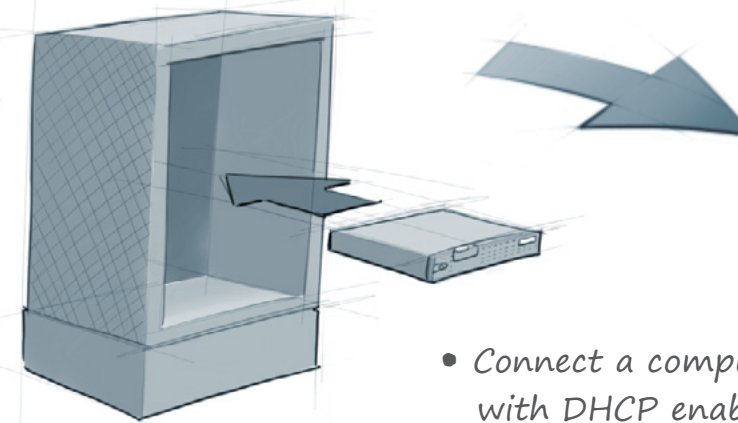
- Ensure that your Forcepoint cloud service account is established and that you have performed your first directory synchronization.
- Log in to the cloud service portal: <https://admin.forcepoint.net/portal>
- In the Cloud TRITON Manager console, click Network Devices and enter new appliance information.

2 i-Series Appliance Setup and Configuration

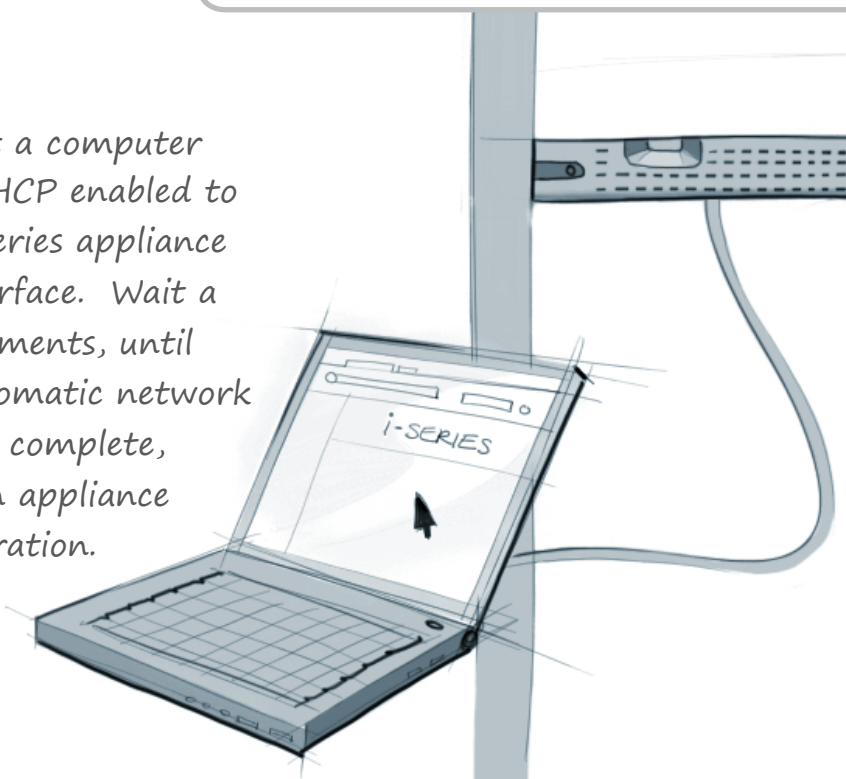
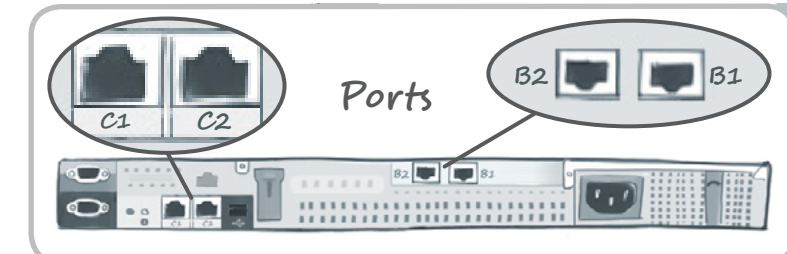
- Verify accessory box content.



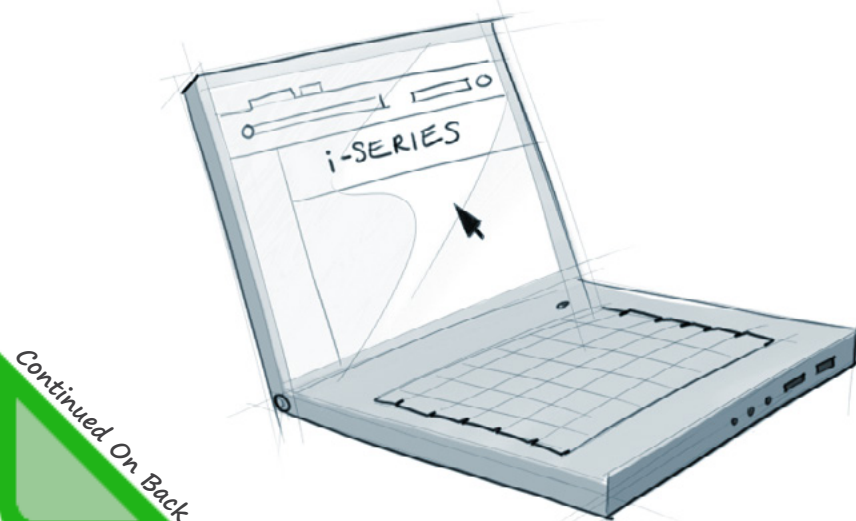
- Rack the appliance and plug it in.
- Power the appliance on and allow the boot sequence to complete.



- Connect a computer with DHCP enabled to the i-Series appliance C1 interface. Wait a few moments, until the automatic network setup is complete, to begin appliance configuration.

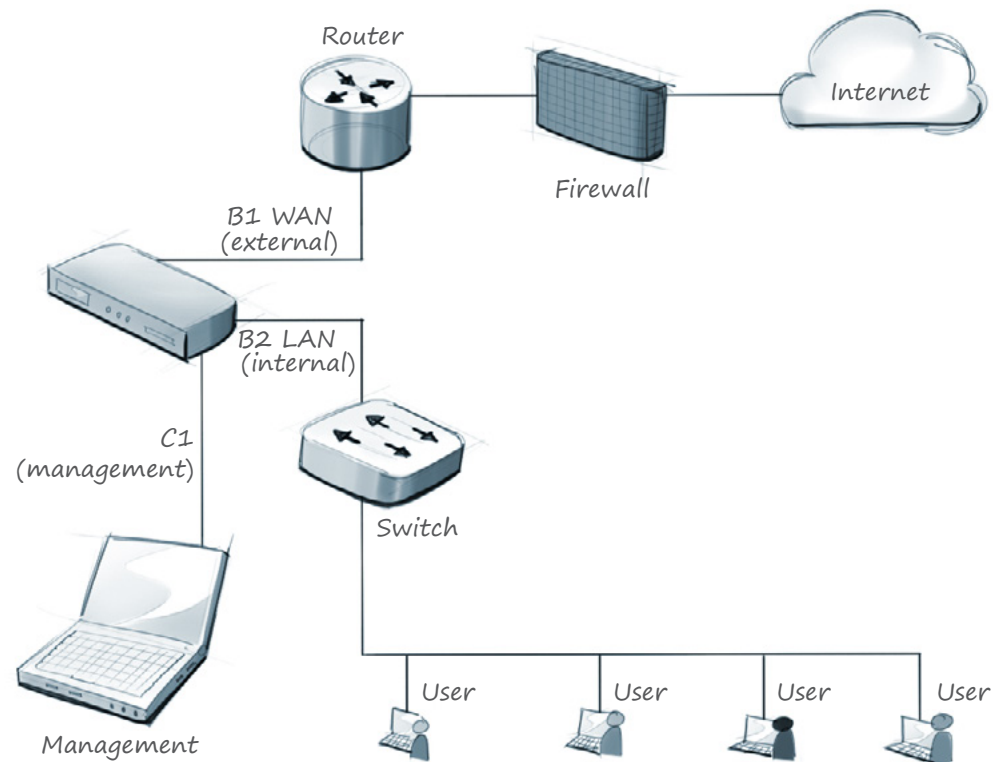


- Log in to the appliance via a web browser connection (<https://169.254.0.2>; credentials are admin/admin)
- Complete the i-Series appliance First-Time Configuration Wizard.
- Log off the appliance and disconnect the computer from the appliance.



Continued On Back

3 Connect the Appliance to Your Network



4 Appliance Registration

- In the Cloud TRITON Manager console, click Network Devices.
- Select the row that contains your new appliance and click Register.
- Copy the registration key to the clipboard.

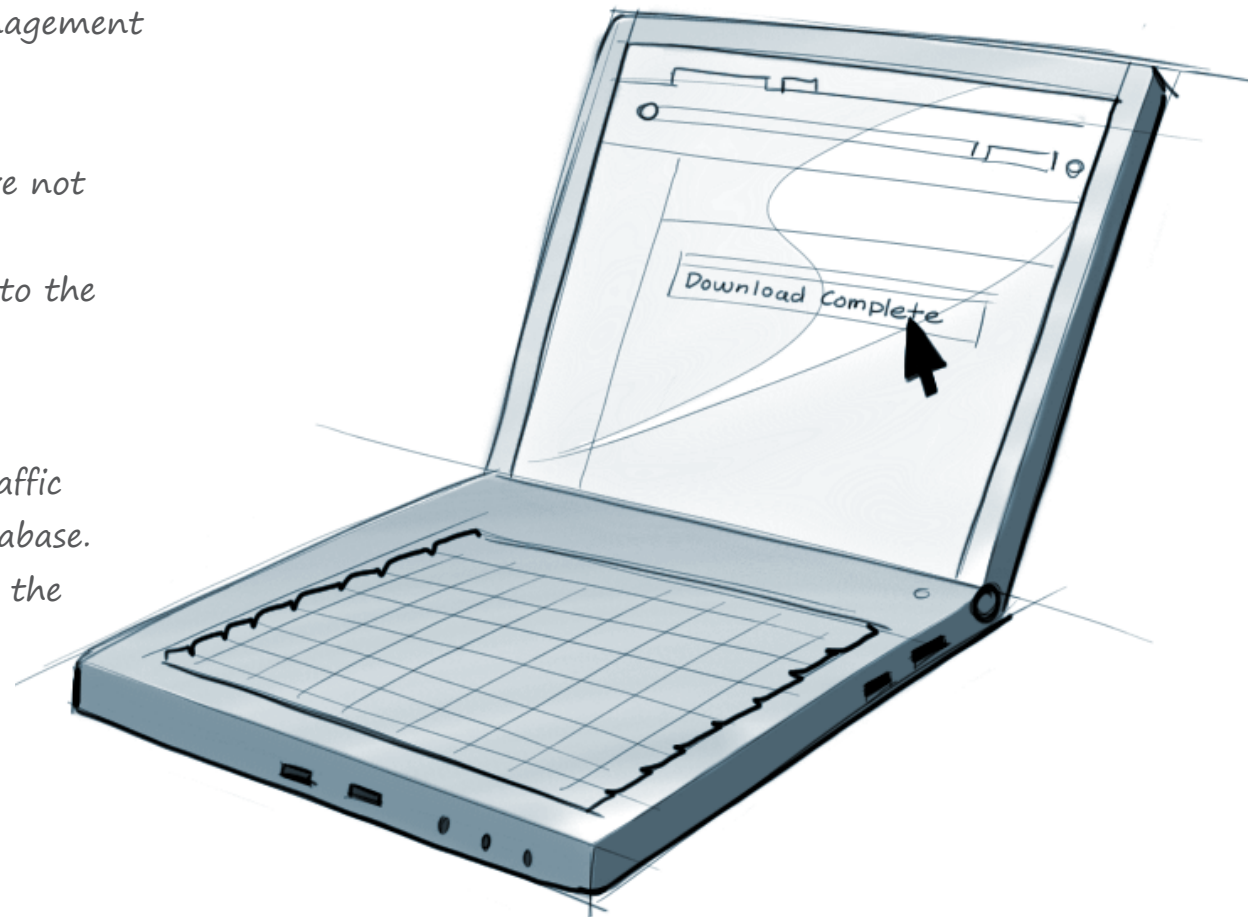


5 Registration Completion and Password Change

- Reconnect to the appliance using the management IP address (C1) or the default address (169.254.0.2) and log in.
- Change the appliance password if you have not already done so.
- Paste the cloud service registration key into the Registration Key field.

The Web category database update begins automatically. The appliance can analyze traffic during the update using a pre-installed database. Traffic analysis may be more accurate after the update is complete.

You Are Done!



Deployment Reference Sheet

Forcepoint Cloud Service Portal:

Logon portal URL:

Appliance Outbound Traffic Interface (B1, B2):

IP address:

Subnet mask:

Default gateway:

VLAN tag (management traffic):

Appliance Management Interface (C1):

IP address:

Subnet mask:

DNS Servers:

Primary DNS:

Secondary DNS:

Tertiary DNS:

Appliance Information

Logon URL:

Hostname:

Appliance manager user name is admin.

Support and Resources

Getting Started Guide
www.forcepoint.com/library/

Online Support and Contact Information
support.forcepoint.com