

# READ FIRST!

## Forcepoint X10G™ Quick Start Poster

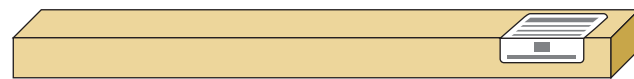
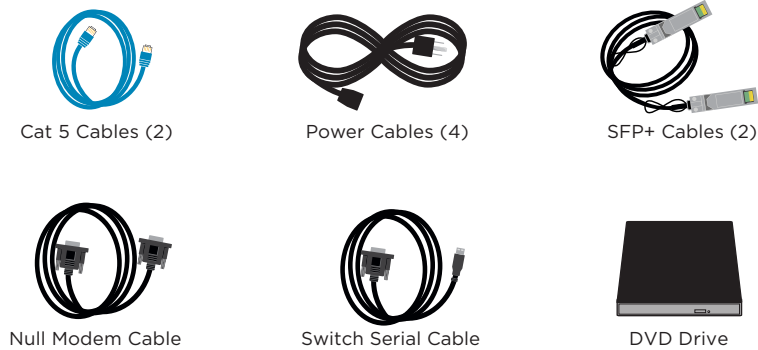
This poster describes setup steps for the X10G chassis and blade system.

### ⚠ Before you begin

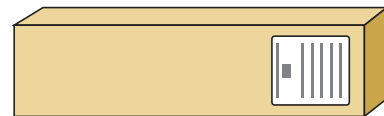
Plan your deployment before setting up the X10G.

You can access documentation at:  
<http://www.forcepoint.com>

### 1 Verify Contents



Sliding Ready Rail Kit



Blades are in separate cartons

Contact Forcepoint Technical Support if any items are missing.

### 2 Rack and Install

See the Rack Installation Instructions in the Sliding Ready Rail Kit.  
*Note: 4 persons required for racking chassis.*

After the chassis has been racked, slide blades into the slots of the chassis starting in slot 1 (top left slot).

*Note: Blades slide smoothly when hanging from the top rail. Do not force.*

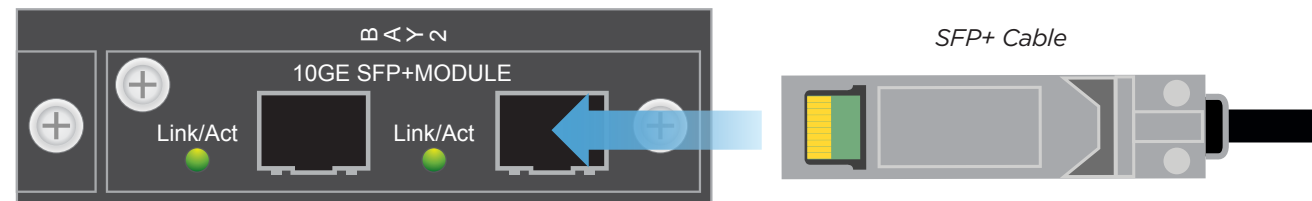
### 3 Connect to Network

#### With VLAN

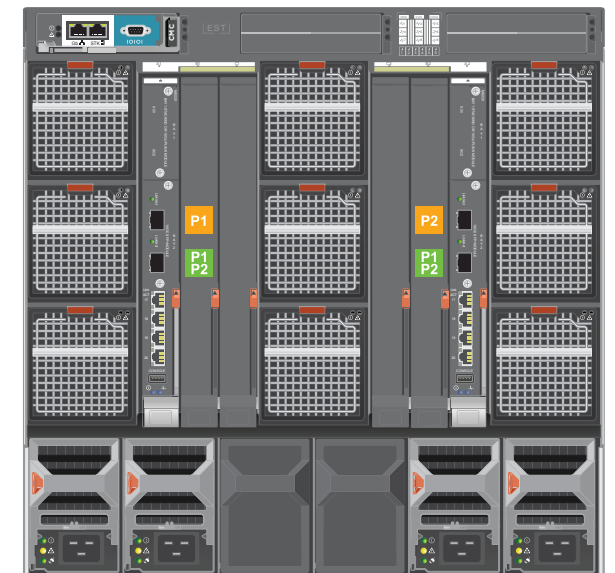
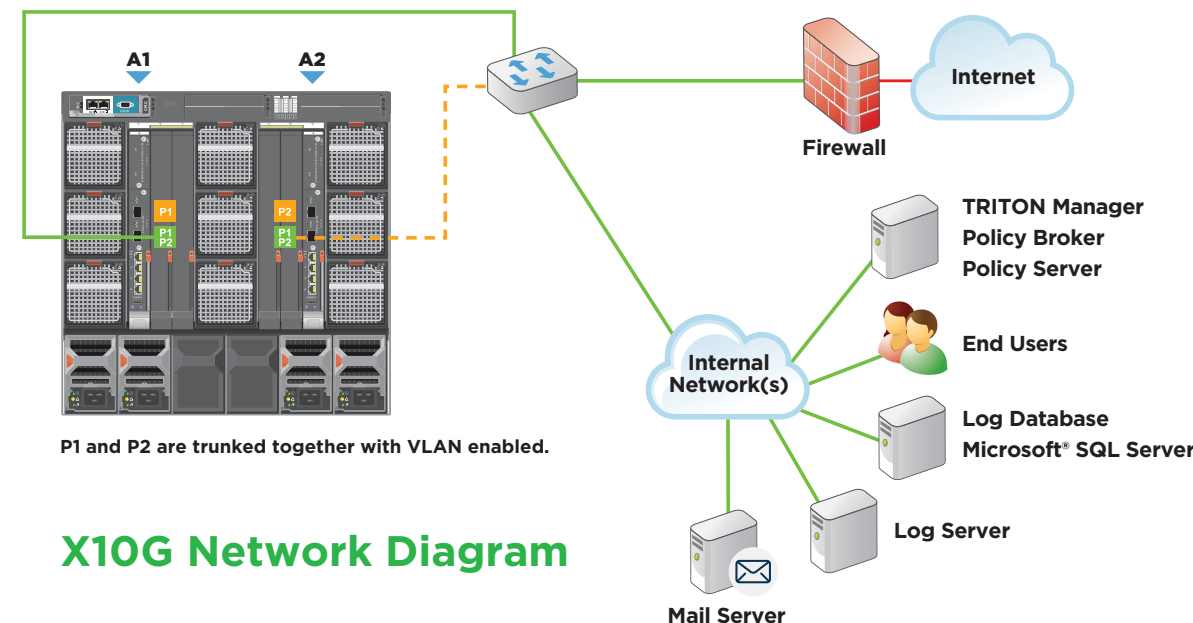
To support VLAN configuration, connect to the lower 10G port on switch A1. Use the lower 10G port on switch A2 for high availability.

#### Without VLAN

The only port required for deployment is the lower or upper 10G port on switch A1. The lower or upper 10G port on switch A2 is optional and is dependent upon your network topology. If you have an optical transceiver kit, connect appropriate fiber optic cables. Otherwise, connect the SFP+ cable provided for P1 on switch A1.



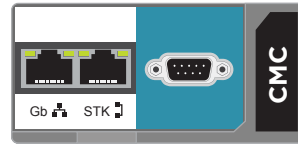
Switch	With VLAN	Without VLAN
A1	<ul style="list-style-type: none"><li>P1 &amp; P2 trunked together on lower 10G port</li><li>• All traffic</li></ul> Upper 10G port reserved for future use	<ul style="list-style-type: none"><li>P1 on lower or upper 10G port</li><li>• Traffic of proxy / email data, block page, database download, TRITON component communication</li></ul> The remaining 10G port on the switch can be configured for high availability of P1 (referring to switch KBA 7443)
A2	<ul style="list-style-type: none"><li>Lower 10G port for high availability of P1 &amp; P2 (trunked together)</li><li>• All traffic</li></ul> Upper 10G port reserved for future use	<ul style="list-style-type: none"><li>P2 (if enabled) on lower or upper 10G port</li><li>• Traffic of proxy / email egress data</li></ul> The remaining port on the switch can be configured for high availability of P2 (referring to switch KBA 7443)



### 4 See back for steps to complete your setup

## 4 Connect Input Device

1. Connect 4 power cables to the 4 power supply units at the lower back of the chassis.
2. Connect a Cat 5 cable from the leftmost Chassis Management Controller (CMC) network port to a switch on the network for the CMC and iDRAC management IP addresses.



## 5 Power On Appliance

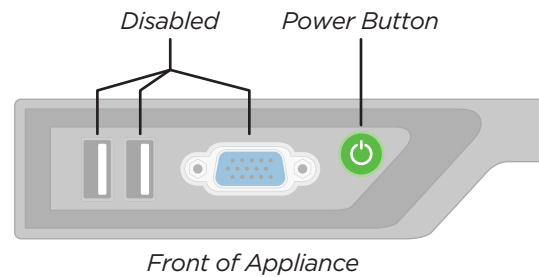
Power on the chassis at the front (lower left corner below slot), and check the following indicators:

### Front:

- Power button is illuminated.
- Hard drive LEDs are green.

### Rear:

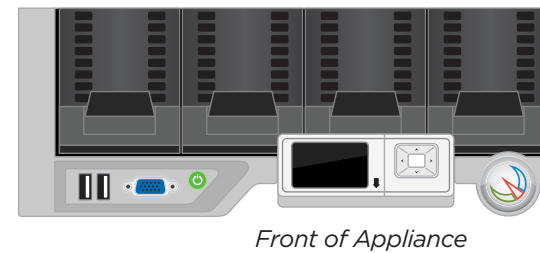
- Power supply LEDs are green.
- LEDs for both switches, the CMC, and all fans are green.



## 6 Set CMC IP Address

Use chassis LCD to configure CMC.

1. Pull out LCD screen on front of chassis.
2. Select your language preference.
3. Configure the CMC? **YES**
4. Specify the network speed. **Auto (1g)**
5. Specify the protocol type. **IPv4**
6. IP addressing mode: **Static**
7. Enter the static IP address of the Chassis Management Controller.
8. Enter the subnet mask for this IP address.
9. Enter the default gateway for this IP address.
10. Confirm your IP address settings.
11. Specify if you want to register DNS. **NO (select X)**
12. Configure iDRACs? **NO (select X)**
13. Apply all enclosure settings? **YES**



## Support and Resources

X-Series™ Getting Started Guide  
[www.forcepoint.com](http://www.forcepoint.com)

Online Support and Contact Information  
[www.forcepoint.com/support/](http://www.forcepoint.com/support/)

## 7 Use Web Access to CMC

Retrieve your Pre-deployment Checklist and Reference Worksheet with your IP addresses listed.

1. From your client PC, point an Internet Explorer browser to the IP address of the Dell CMC.
2. Log on with username: root password: calvin
3. Select **Server Overview** in the left navigation bar.
4. Select the **Setup** tab.
5. Ensure **QuickDeploy** checkbox is enabled.
6. Set **Starting iDRAC IPv4 Address (Slot 1)** of your assigned IP address range for iDRACs.
7. Click **Save QuickDeploy Settings**.
8. Click **OK** on the popup.
9. Click **Auto-Populate Using QuickDeploy Settings**.  
*Note: Contiguous IP addresses are assigned consecutively to all 16 individual slots for iDRACs.*
10. Scroll down to verify the individual iDRACs have been set. Then click **Apply iDRAC Network Settings**.
11. Click **OK** on the popup.
12. Select **Chassis Overview** in the left navigation bar.
13. Select the **User Authentication** tab.
14. Select **User ID 1**.
15. Change the password (this password will be used for accessing the CMC iDRAC and each blade iDRAC). Click **Apply**.

## 8 Access Firstboot Configuration

During the firstboot wizard, you must select or point to the IP address of the policy source machine. Set that server up off-chassis first, or use Slot-1 for the policy source.

1. From CMC interface, select SLOT-1 and click Launch Remote Console.
2. Begin firstboot configuration wizard.
3. Repeat for each security blade, as directed in the Getting Started Guide. Follow Web or Email steps, as appropriate.

## 9 Configuration Overview

Below is an overview of remaining configuration steps for each blade. Please refer to the Getting Started Guide for more details.

### Pre-Configuration

1. Download TRITON installer from [www.forcepoint.com](http://www.forcepoint.com).
2. Configure and launch Microsoft SQL Server 2008/2012 off-chassis.
3. Install TRITON management console and reporting components off-chassis.

### Initial Configuration

**Management console (off-chassis):** Enter subscription key and customize policies.

**Content Gateway Manager:** Configure authentication and select protocols.