

v7.8.2 Release Notes for X10G Appliance

Topic 65052 / Updated: 20-Feb-2014

Applies To:	Websense® X10G Appliance v7.8.2
--------------------	---------------------------------

Use these Release Notes to find information about what's new and improved in the Websense® X10G Appliance version 7.8.2. Note that the upgrade path from v7.7.x varies depending on where the policy source resides (on-appliance or off-appliance). For assistance with obtaining a copy of the guide on upgrading an X-Series appliance from v7.7.x to v7.8.2, please contact your Websense territory account manager or Partner.

- ◆ [New in X10G Appliance v7.8.2, page 2](#)
- ◆ [Installation, page 5](#)
- ◆ [Operating tips, page 6](#)
- ◆ [Resolved and known issues, page 7](#)

In this release, the X10G appliance can host the TRITON Web Security Gateway (Anywhere) component of TRITON Enterprise.

The following is a list of the TRITON security modules and their management console.

Software module	Description	Console name
TRITON Unified Security Center	Manages configuration and settings common to all modules. Provides centralized access to consoles.	TRITON Unified Security Center
Websense Web Security	Uses policies to manage Internet requests from clients.	Web Security manager
Websense Content Gateway	A Web proxy that includes real-time content analysis.	Content Gateway manager

New in X10G Appliance v7.8.2

Topic 65053 / Updated: 20-Feb-2014

Applies To:	Websense® X10G Appliance v7.8.2
--------------------	---------------------------------

- ◆ *Architecture upgrades*
- ◆ *Command-line interface replaces graphical user interface*
- ◆ *Web Security Gateway (Anywhere) software upgrade*
- ◆ *Upgrade and migration process changes*
- ◆ *Other enhancements and changes*

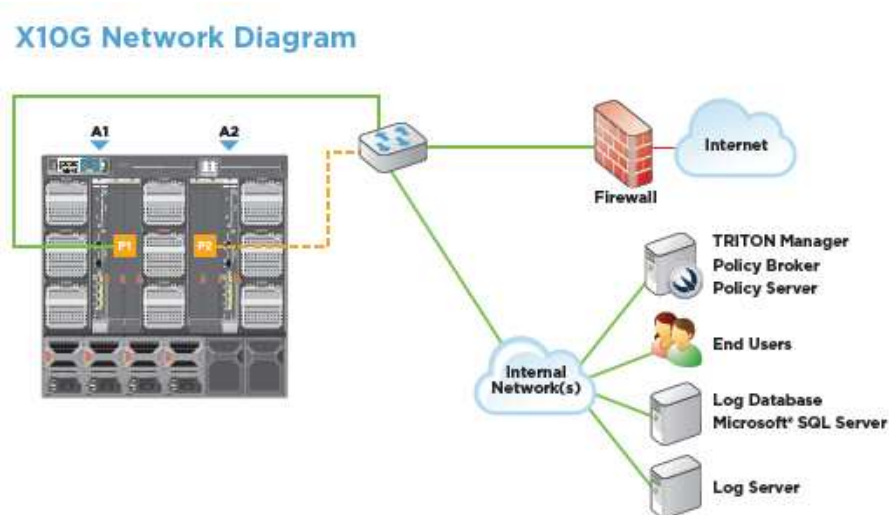
Architecture upgrades

Version 7.8.2 introduces major product architecture changes for Websense X-Series appliances:

- ◆ The graphical, browser-based Appliance manager console has been replaced. The configuration steps previously performed in the Appliance manager are now accomplished via the appliance command-line interface (CLI).
- ◆ Several appliance settings, including IP addresses and SNMP settings cannot be automatically migrated to v7.8.2, and will need to be reconfigured after upgrading.
- ◆ In this release, **Network Agent is not supported on the X-Series appliance**. If you are running Network Agent on a blade, migrate Network Agent to another server before upgrading.
- ◆ VLAN support is not included in this release.
- ◆ Software has been decoupled from the underlying operating system making it easier to perform upgrades in the future, as applications on the blades change
- ◆ An upgraded file system provides increased performance for large files.
- ◆ Unneeded services have been removed to optimize performance.
- ◆ Virtualization has been removed from within each blade, which eliminates the need for a hypervisor and optimizes performance.
- ◆ Interface C is no longer used. Interface P1 is used for all network communication.
- ◆ Chassis switch configuration is now much simpler. Only port A1.P1 (10 GB Te1/2/1) is required. Optionally, A2.P2 (10 GB Te1/2/1) can be used to supplement traffic flow to the Content Gateway proxy. All other ports are administratively shut down by default. The second 10 gigabit port on each switch can be used to support high availability (see the [Getting Started guide](#)). The switches must be re-initialized. Contact Technical Support for assistance.
- ◆ Firstboot can be run only once for each blade, and the security mode is selected during firstboot. You must reimaging the blade to change the security mode.

- ◆ The operating system has been upgraded to Cent OS 6.4, and full 64-bit support is now provided for all components.

Here is an overview of the X10G Appliance network:



Command-line interface replaces graphical user interface

In this release, X-Series appliances are now configured and maintained through a command-line interface (CLI), which replaces the web-based graphical user interface (GUI) referred to in prior releases as the Security Blade Manager or Appliance manager. The CLI is a text-based interface for configuring and monitoring the appliance. Having a CLI enables administrators to manage configuration and updates for all blades via Linux scripts. They can also run CLI commands in a unified way, with a set of features that Websense already implemented in previous versions.

Typically, commands are verbs, like "show," "set," and "save," among others, which are presented in this format:

```
Command + Option + Parameter
```

For example:

```
set system host
```

Some commands can take multiple options and parameters. For example:

```
set system host --name <host_name> --description
<host_description>
```

The major advantage of the sentence-structure CLI is that it is easy to understand and to integrate with other tools and scripts. Within the CLI, you can also receive built-in

help if you enter “help” before a command or a “?” after a command. For example, enter "help set trap" or “set trap?” for additional information about the set trap function.

For more details, see the [Websense Appliance Command Line guide](#).

Web Security Gateway (Anywhere) software upgrade

Websense Web Security Gateway (Anywhere) software, which is offered on the X10G Appliance, has been upgraded. For details on changes to these products since v7.7.1, see the following Release Notes:

- ◆ [Web Security Release Notes for v7.7.3](#)
- ◆ [Web Security Release Notes for v7.8.1](#)
- ◆ [Web Security Release Notes for v7.8.2](#)
- ◆ [Content Gateway Release Notes for v7.7.3](#)
- ◆ [Content Gateway Release Notes for v7.8.1](#)
- ◆ [Content Gateway Release Notes for v7.8.2](#)

Upgrade and migration process changes

The upgrade path varies depending on where the **policy source** resides. For assistance with obtaining a copy of the guide on Upgrading an X-Series appliance from v7.7.x to v7.8.2, please contact your Websense territory account manager or Partner.

Note that the on-box TRITON Unified Security Center settings from older versions of the X-Series appliance (versions prior to 7.7.x) cannot be migrated to a 7.8.2 appliance. You need to manually re-configure those settings for a 64-bit Windows installation of the TRITON console.

The main steps for upgrading an entire chassis include the following:

- ◆ Back up the Websense Web Security policy and Websense Content Gateway settings through the Appliance manager.
- ◆ Update the chassis switch and ports configuration. For details on how to reconfigure the switches, see the [Getting Started guide](#).
- ◆ Reimage every security blade, so that they are version 7.8.2 of Web Security Gateway (Anywhere). Patch upgrades are not supported because of the architectural changes.
- ◆ Restore Web Security policy and Content Gateway settings to the local file system. Contact Websense Technical Support for assistance doing this.

Other enhancements and changes

- ◆ The patch process has changed. It was previously done through the appliance manager console. It is now performed via a command-line interface.
- ◆ Patches can be applied only via each blade's iDrac (local console), and not through the remote SSH client.
- ◆ Internet Protocol version 6 (IPv6) is not supported in this release.
- ◆ The hotfix management facility is not supported.
- ◆ Alerts, which used to be displayed on the Appliance Manager console, are now sent to log files.
- ◆ The ability to customize block pages is not supported in this release.
- ◆ The CLI does not include a set of troubleshooting commands. These will be added in a future release. For assistance with troubleshooting, please contact Websense Technical Support.

Installation

Topic 65054 / Updated: 20-Feb-2014

Applies To:	Websense X-Series Appliances Version 7.8.2
--------------------	--

X-Series appliances are delivered pre-loaded with the software needed for provisioning via the **firstboot** script.

The [Quick Start](#) poster and [Getting Started Guide](#) are your comprehensive resources for installing the physical unit, running **firstboot**, and completing initial configuration.

Downloading the TRITON Unified Security Center Installer or the Web Security Linux installer

The TRITON Unified Security Center and several support components are installed off of the appliance, on separate servers.

To download the TRITON Unified Installer (for Windows 64-bit servers) or the Web Security Linux installer:

1. Go to mywebsense.com and log in to your account.
You are taken to the My Products and Subscriptions page.
2. Click the **Downloads** tab.
3. Under Download Product Installers, select your **Product and Version (7.8.2)**.
The available installers are listed in the form.

4. Click the plus sign (“+”) next to an installer entry for more information about the installer.
5. Click the **download** link to download the installer.

Operating tips

Topic 65055 / Updated: 20-Feb-2014

Applies To:	Websense X-Series Appliances Version 7.8.2
--------------------	--

Interface setup tip

If the P2 interface is used and it is in the same subnet as P1, the default gateway is automatically assigned to P2, which is bound to eth1. You should perform a test to ensure that outbound packets can reach the Internet.

Avoiding port conflicts

See the [ports list](#) for a table of the Websense software module versions that are compatible with each appliance version.

Check the ports article to avoid port conflicts if you plan to make a change from a default port.

For example, if you want to use an HTTP proxy server port that is different from the default port (8080), be sure to check the ports list first, to avoid conflict with ports already in use by the X-Series.

Deployment tips

- ◆ When Policy Broker is run on a X-Series appliance (configured as the **Full policy source**), all Policy Servers that point to that Policy Broker (configured as **User directory and filtering**) must be installed on X-Series appliances as well. You cannot install and run Policy Servers on off-box machines and point them to a Policy Broker that runs on an appliance. This configuration is not supported.
However, you can run Policy Server on multiple appliances (**User directory and filtering** mode) and point these appliances to a Policy Broker running either on or off an appliance.
- ◆ When Web Security Gateway (Anywhere) is deployed and Content Gateway **Integrated Windows Authentication** (IWA) is configured, if the appliance hostname is changed, IWA will immediately stop working. To repair the IWA

configuration, log onto the Content Gateway manager, unjoin the stale domain and join the domain with the new hostname.

- ◆ Policy Broker replication is not supported when Policy Broker resides on an appliance. If you plan to enable Policy Broker replication, be sure that your policy source is not an appliance.

Subscription key tips

In a deployment with multiple Policy Server appliances, use the Web Security Gateway Anywhere subscription key for the policy source appliance (the Policy Server that connects to Sync Service), and use a Web Security Gateway subscription key for all other appliances. Otherwise, you receive superfluous alerts from the hybrid service.

Backup and restore tips

- ◆ When configuring scheduled backups to a remote storage location (FTP, TFTP, or Samba share), make sure that the account used for backup file creation has **read** and **write** permissions.
- ◆ In a multiple security blade deployment, after restoring the configuration of a **Policy source** security blade, restart any **Filtering only** or **User directory and filtering** security blades in your network to ensure that user requests are managed correctly.

Resolved and known issues

Topic 65056 / Updated: 25-Feb-2014

Applies To:	Websense® X-Series Appliances v7.8.2
--------------------	--------------------------------------

A [list of resolved and known issues](#) in this release is available to customers with a current MyWebsense account.

If you are not currently logged in to MyWebsense, the link takes you to a login prompt. Log in to view the list.