

READ FIRST!

Websense® X10G™ Quick Start Poster

This poster describes setup steps for the X10G chassis and blade system.

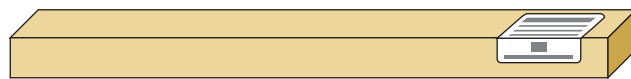
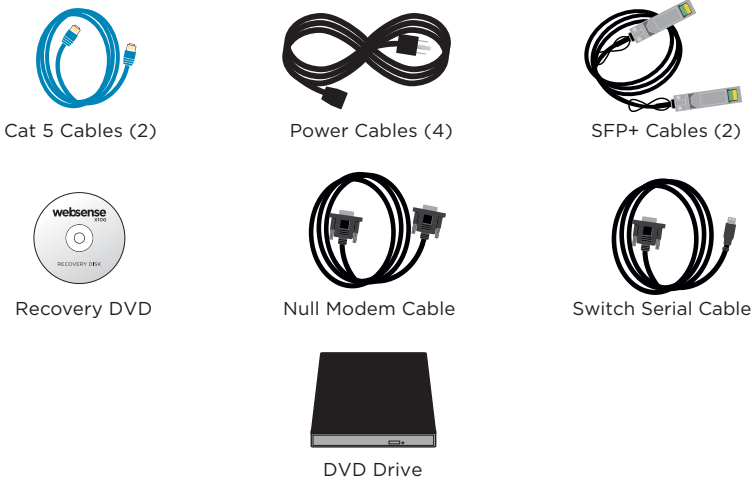
⚠ Before you begin

Plan your deployment before setting up the X10G.

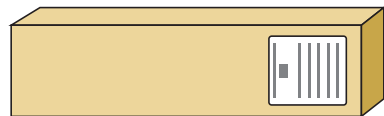
You can access documentation at:

http://www.websense.com/content/x10g_support.aspx

1 Verify Contents



Sliding Ready Rail Kit



Blades are in separate cartons

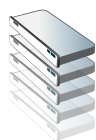
Contact Websense Technical Support if any items are missing.

2 Rack and Install



See the Rack Installation Instructions in the Sliding Ready Rail Kit.

Note: 4 persons required for racking chassis.



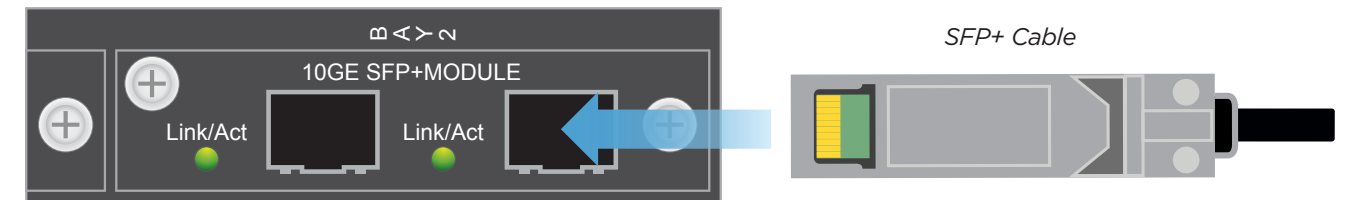
After the chassis has been racked, slide blades into the slots of the chassis starting in slot 1 (top left slot).

Note: Blades slide smoothly when hanging from the top rail. Do not force.

3 Connect to Network

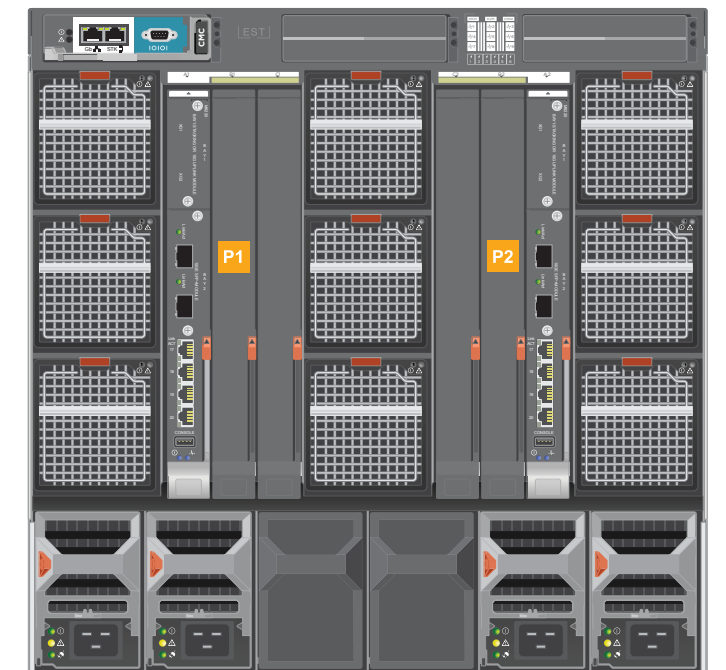
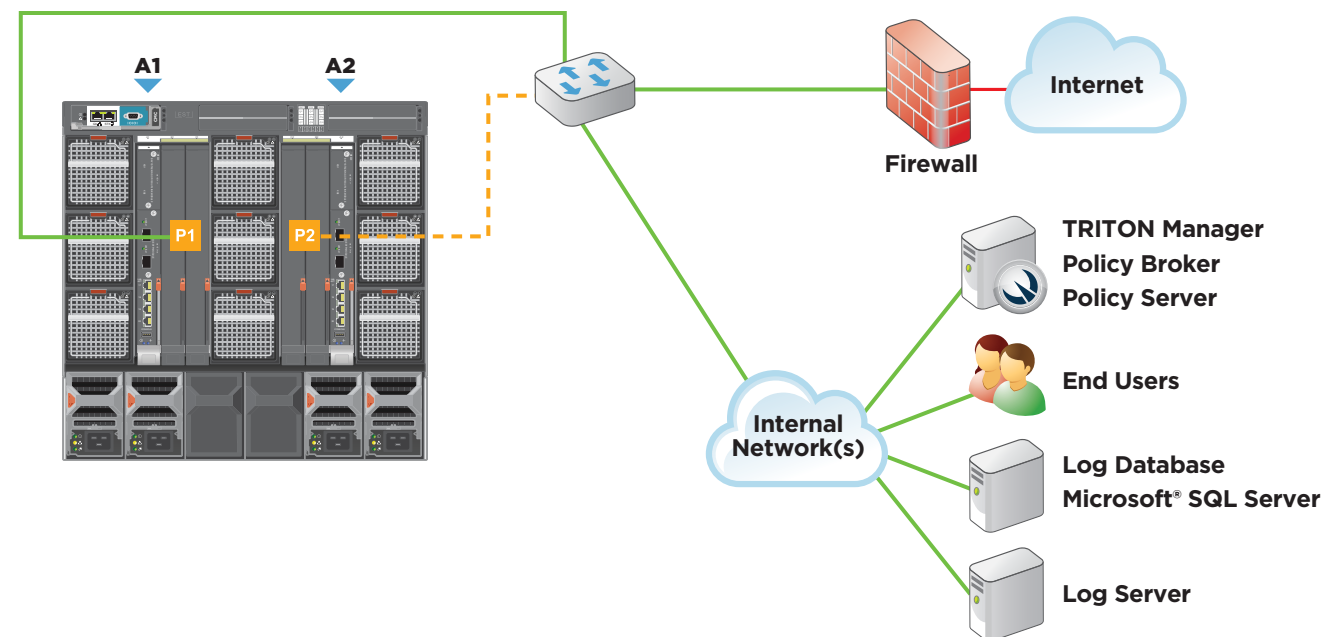
The only port required for deployment is the P1 port on switch A1. The P2 port on switch A2 is optional and is dependent upon your network topology. If you have an optical transceiver kit, connect appropriate fiber optic cables. Otherwise, connect the SFP+ cable provided for P1 on switch A1.

	Switch A1	Switch A2
Required Ports:	P1	
Optional Ports:		P2



Interface	Connection Requirements	Function
P1	<ul style="list-style-type: none"> Access to DNS server and Internet. Accessible by client computers and computers administering appliance. 	<ul style="list-style-type: none"> Provides communication for security blade modules, block pages, and handles database downloads from the Internet. Receives connections from Websense® TRITON™ Unified Security Center. Enables Websense Content Gateway (proxy) to receive Internet requests and communicate with Web servers.
P2	<ul style="list-style-type: none"> Access to DNS server and Internet. 	<ul style="list-style-type: none"> Enables Websense Content Gateway (proxy) to receive Internet requests and communicate with Web servers.

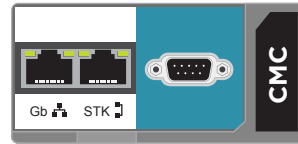
X10G Network Diagram



4 See back for steps to complete your setup

4 Connect Input Device

1. Connect 4 power cables to the 4 power supply units at the lower back of the chassis.
2. Connect a Cat 5 cable from the leftmost Chassis Management Controller (CMC) network port to a switch on the network for the CMC and iDRAC management IP addresses.



5 Power On Appliance

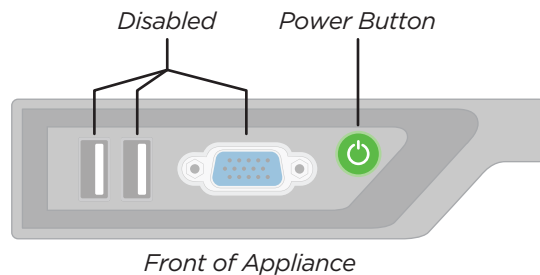
Power on the chassis at the front (lower left corner below slot), and check the following indicators:

Front:

- Power button is illuminated.
- Hard drive LEDs are green.

Rear:

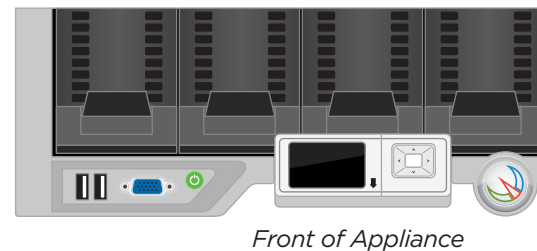
- Power supply LEDs are green.
- LEDs for both switches, the CMC, and all fans are green.



6 Set CMC IP Address

Use chassis LCD to configure CMC.

1. Pull out LCD screen on front of chassis.
2. Select your language preference.
3. Configure the CMC? **YES**
4. Specify the network speed. **Auto (1g)**
5. Specify the protocol type. **IPv4**
6. IP addressing mode: **Static**
7. Enter the static IP address of the Chassis Management Controller.
8. Enter the subnet mask for this IP address.
9. Enter the default gateway for this IP address.
10. Confirm your IP address settings.
11. Specify if you want to register DNS. **NO (select X)**
12. Configure iDRACs? **NO (select X)**
13. Apply all enclosure settings? **YES**



Support and Resources

WebSense® X-Series™ Getting Started Guide
www.websense.com/library/

Online Support and Contact Information
www.websense.com/support

7 Use Web Access to CMC

Retrieve your Pre-deployment Checklist and Reference Worksheet with your IP addresses listed.

1. From your client PC, point an Internet Explorer browser to the IP address of the Dell CMC.
2. Log on with username: root password: calvin
3. Select **Server Overview** in the left navigation bar.
4. Select the **Setup** tab.
5. Ensure **QuickDeploy** checkbox is enabled.
6. Set **Starting iDRAC IPv4 Address (Slot 1)** of your assigned IP range for iDRACs.
7. Click **Save QuickDeploy Settings**.
8. Click **OK** on the popup.
9. Click **Auto-Populate Using QuickDeploy Settings**.
Note: Contiguous IP addresses are assigned consecutively to all 16 individual slots for iDRACs.
10. Scroll down to verify the individual iDRACs have been set. Then click **Apply iDRAC Network Settings**.
11. Click **OK** on the popup.
12. Select **Chassis Overview** in the left navigation bar.
13. Select the **User Authentication** tab.
14. Select **User ID 1**.
15. Change the password (this password will be used for accessing the CMC iDRAC and each blade iDRAC). Click **Apply**.

8 Access Firstboot Configuration

During the firstboot wizard, you must select or point to the IP address of the Policy Source Machine. Set that server up off-chassis first, or use Slot-1 for the Policy Source.

1. From CMC interface, select SLOT-1 and click Launch Remote Console.
2. Begin firstboot configuration wizard.
3. Repeat for each security blade.

9 Configuration Overview

Below is an overview of remaining configuration steps for each blade. Please refer to the Getting Started Guide for more details.

Pre-Configuration

1. Download TRITON installer from www.websense.com.
2. Configure and launch Microsoft SQL Server 2008/2012 off-chassis.
3. Install TRITON management console and Log Server off-chassis.

Initial Configuration

Web Security console (off-chassis): Enter subscription key, update Master URL Database, and customize policies. Requires Windows Server 2008 or 2012 with TRITON Unified Security Center, Web Security Log Server and optional components.

Content Gateway Manager: Configure authentication and select protocols.