

Quick Start Guide

WebSense V10000 G2

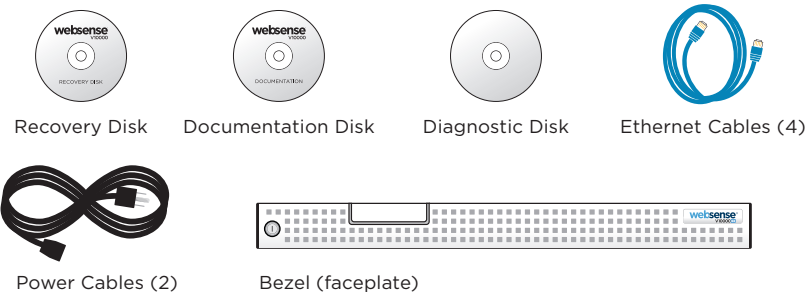
Web & Email Security Gateway

! Before you begin...

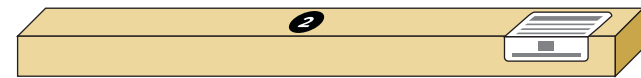
Plan your deployment before setting up the appliance. See the back of this guide for a deployment overview and reference sheet.

1 Verify Contents

1 Accessory Kit

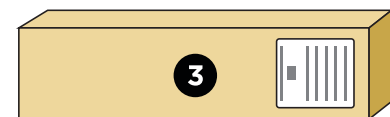


2 Sliding Ready Rail Kit



- Left Ready Rail
- Right Ready Rail
- Velcro Straps (2)
- Rack Installation Instructions

3 Cable Management Arm Kit



- Cable Management Arm
- Cable Tie Wraps
- Static Support Tray
- CMA Installation Instructions
- Status Indicator Cable

Contact Websense Technical Support if any items are missing.

2 Rack Appliance



See the **Rack Installation Instructions** included in the Sliding Ready Rail kit.

3 Determine Security Mode

The appliance supports the following security modes:

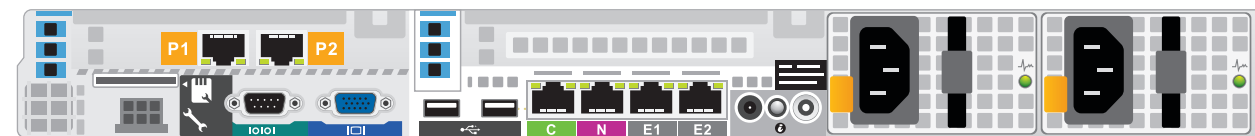
- **Web Security only**
- **Email Security only**
- **Web & Email Security**

Based on your subscription and deployment plan, determine the appropriate security mode for this appliance.

4 Connect Network Cables

Connect the appliance interfaces required by the security mode for this appliance. *Cat 5E cables (or better) are required. Do not use crossover network cables.*

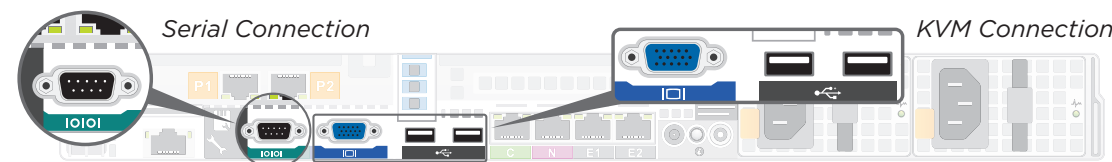
	Web Security Only	Email Security Only	Web & Email Security
Required Ports:	C P1 N	C E1	C P1 N E1
Optional Ports:	P2 E1 E2	E2 P1 P2	P2 E2



Interface	Function
C	<ul style="list-style-type: none">• Provides communication for appliance modules and handles database downloads from Internet.• Receives connections from TRITON Unified Security Center.
P1 P2	<ul style="list-style-type: none">• Enables Websense Content Gateway (proxy) to receive Internet requests and communicate with Web servers.• Optionally bonded to E1/E2 in Email Security only mode.
N	<ul style="list-style-type: none">• Allows Network Agent to monitor all Internet requests.• Connect to switch port. If sending blocking information through N, connect to bidirectional span, monitor, or mirror port on switch.
E1 E2	<ul style="list-style-type: none">• Enables Email Security Gateway to receive and send mail.• Provides personal email management and cluster communication.• Requires access to mail server.• Optionally bonded to P1/P2 in Web Security only mode.

5 Connect Input Device

1. Connect to the appliance via serial port or KVM in order to access the command line interface for initial configuration. *Serial port settings are: 9600 baud, 8 bits, no parity.*



2. Secure power cables using velcro straps and plug power cables into an appropriate power source.



6 Power On Appliance

Power on the appliance and check the following indicators:

Front

- Power button is illuminated.
- Hard drive LEDs are green.

Rear

- Power supply LEDs are green.
- LEDs for connected interfaces (NICs) are green.
- System status indicator (LED left of power supplies) is solid blue.

Contact Websense Technical Support if any indicators are not illuminated correctly.

7 Configuration Overview

Please refer to the V-Series Appliance **Getting Started** guide for more details.

Initial Configuration

Appliance Command Line (firstboot script)

- Configure security mode.
- Configure Appliance Controller interface (C).

Appliance Manager

- Access the Appliance Manager via the Logon Portal.
- Configure NTP servers/system time.
- Configure applicable network interfaces.

Web Security Only Mode

TRITON Unified Security Center

- Enter subscription key, update Master Database, configure Network Agent, and configure policies in TRITON - Web Security.
- Requires Windows Server 2008 R2.

Content Gateway Manager

- Configure user authentication and select protocols.

Email Security Only Mode

TRITON Unified Security Center

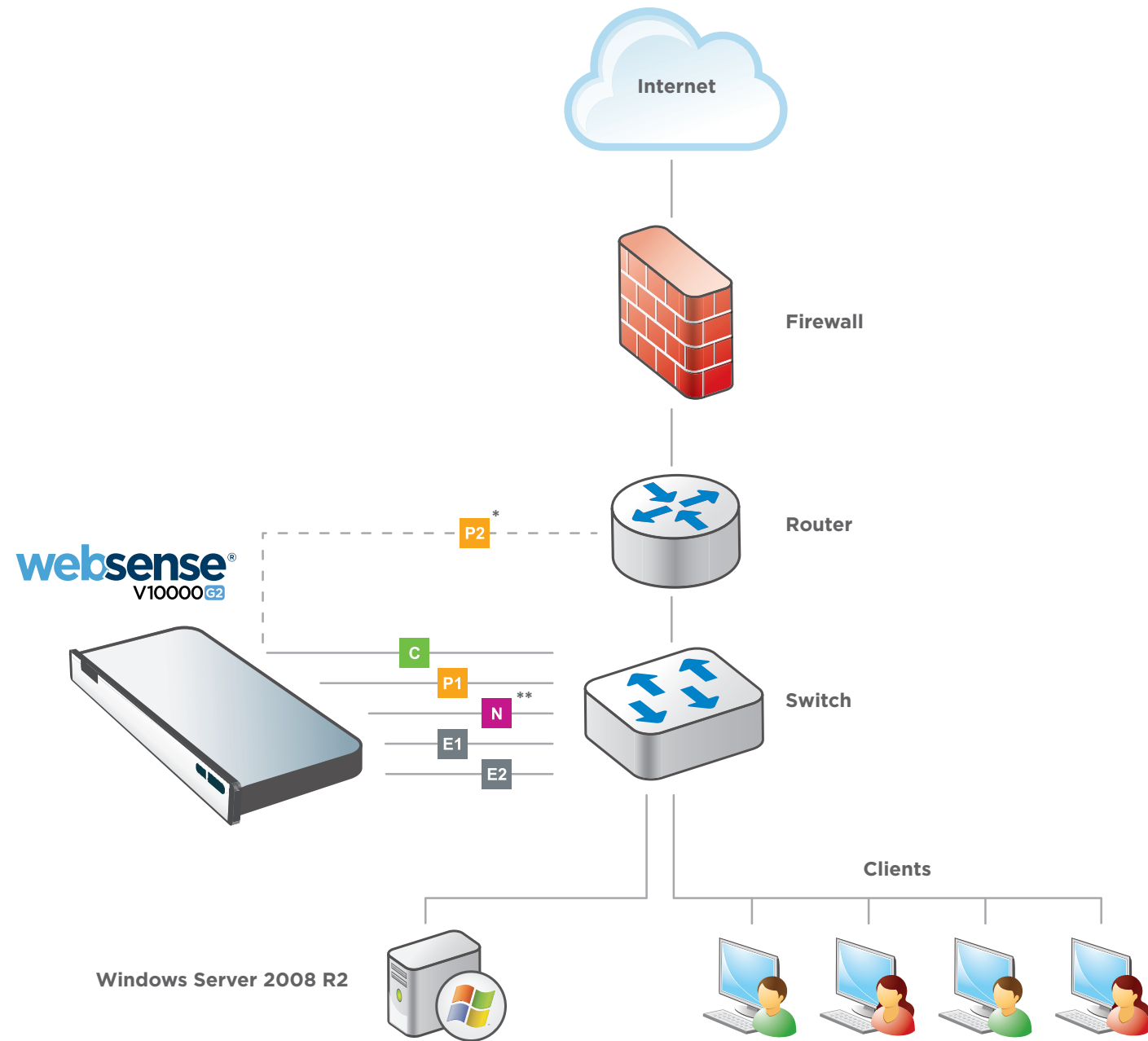
- Complete configuration wizard, enter subscription key, and configure policies in TRITON - Email Security. Configure email DLP policies in TRITON - Data Security.
- Requires Windows Server 2008 R2.

Web and Email Security Mode

Perform steps above for Web Security followed by Email Security.

Appliance Deployment Overview

You can deploy one or more appliances on your network. The diagram below illustrates a basic appliance deployment. A separate computer with Windows Server® 2008 R2 is required for running TRITON Unified Security Center. See the V-Series Appliance **Getting Started** guide for details.



* P2 is optional and may be connected to a router or switch.

** Connect to bidirectional span, monitor, or mirror port if sending blocking information through N.

Support & Resources

Getting Started Guide

www.websense.com/library/

Also available on the Documentation disk.

Online Support and Contact Information

www.websense.com/support/

Deployment Reference Sheet

Appliance Information

Logon Portal URL: Hostname:

admin is the default user name for Appliance Manager, TRITON Unified Security Center, and Content Gateway Manager.

Network Configuration

Appliance Controller Interface (C)

IP Address: Primary DNS:

Subnet Mask: Secondary DNS:

Default Gateway: Tertiary DNS:

Websense Content Gateway Interfaces (P1 & P2)

P1

IP Address: Default Gateway:

Subnet Mask: Primary DNS:

P2 IP Address: Secondary DNS:

Subnet Mask: Tertiary DNS:

Above settings apply to P1 and P2

Network Agent Interface (N)

IP Address: Primary DNS:

Subnet Mask: Secondary DNS:

Default Gateway: Tertiary DNS:

Email Security Gateway Interfaces (E1 & E2)

E1

IP Address: Default Gateway:

Subnet Mask: Primary DNS:

E2 IP Address: Secondary DNS:

Subnet Mask: Tertiary DNS:

Above settings apply to E1 and E2

TRITON Unified Security Center

Web Security

Policy Server IP:

Log Server IP:

Subscription Key:

Email Security

Log Server IP:

Authentication Mode:

SQL Server

IP Address:

User Name:

Password:

See the V-Series Appliance **Getting Started** guide for details.