

In The Mail

Monthly Websense Email Security Threat Brief

Top 10 Classifications of URLs in Email

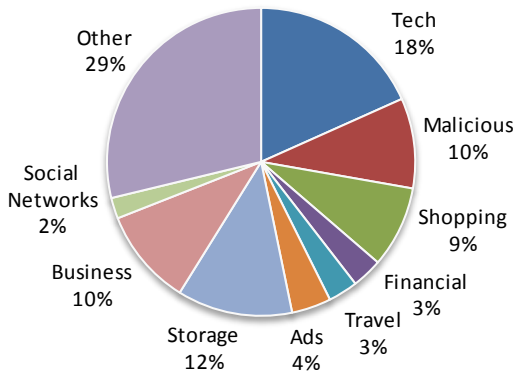


Figure 1: Embedded URLs in Email

Understanding how Web URLs in Email are classified is crucial to stopping converged threats

Top 10 ThreatSeeker™ Malware Discoveries & Closed Window of Exposure

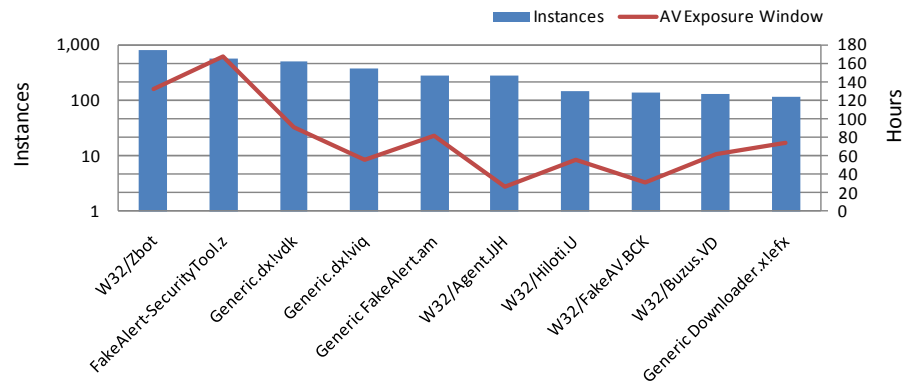


Figure 2: First to Detect

Because of the ThreatSeeker™ Network, our Email Security customers are protected hours, and often days, before other security vendors provide a solution.

KEY STATS

Threats "in the mail" this month:

- 2.8 billion messages processed by the Hosted Infrastructure (over 90 million per day)
- 73.0% of all email was spam
- 83.4% of spam included an embedded URL
- 10 thousand instances of 58 unique zero-day threats stopped by ThreatSeeker before AV
- 2.05% of spam emails were phishing attacks

How Websense is addressing these threats:

- 99.8% spam detection rate. Websense Hosted Email Security provides 99% spam detection Service Level Agreement.
- Average false positive rate of 1 in 206,218
- 0.2% average daily threats protected using ThreatSeeker intelligence before AV signatures were available

What this means:

- The threat landscape is dangerous and growing more sophisticated.
- Websense is on the forefront of finding these threats including the increasingly pervasive blended threats.
- Most importantly, Websense is ideally positioned to address these threats with our market-leading Web security expertise, which drives our leadership in protecting from converged email & Web 2.0 threats.

Merry Christmas! No Spam for You?

Monthly Email Trends from the Security Labs

For the fifth consecutive month, spam levels have [declined](#). This became readily apparent during the Christmas period, where even noted spam bots, particularly Rustock, decreased their usual voluminous output. The bots that did not take a break to celebrate the holidays employed their usual social engineering tricks—pushing out Happy New Year videos and other New Year themed spam, widely speculated to be associated with Waledac/Storm .

Also this month, a new Android Trojan emerging from China called Geinimi displayed some botnet characteristics. The malware can compromise a significant amount of information on a user's Android smartphone and send it to remote servers. The specific information it collects include location coordinates and unique identifiers for the device (IMEI) and SIM card (IMSI).

Finally, [Gallup's 2010 crime survey](#) finds that computer-related crime is a growing problem for average Americans. Eleven percent of U.S. adults report that they or a household member had been a victim of a computer or Internet crime in the past year, up from the 6% to 8% levels found in the previous seven years.

Spam as a Percent of Inbound Email

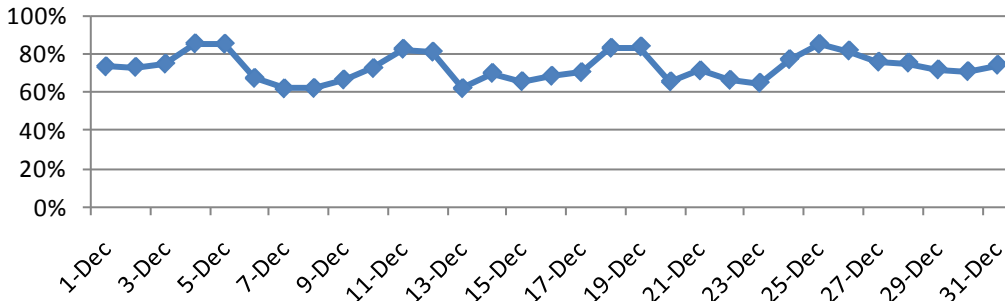


Figure 3 - Percent of email that contains spam (Average 73.0%)

While this figure fluctuates, this signifies that a very high percentage of incoming email is indeed spam. Without a strong email security solution, customers will experience bandwidth and storage capacity issues, frustration, and a drain in productivity, not to mention exposure to significant security risk.

Spam Detection Rate (Ave 99.8%)

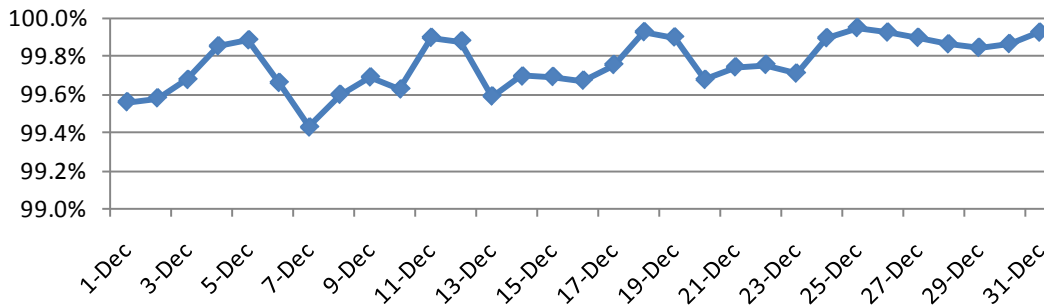


Figure 4 - Percent of spam detected

This is evidence that we are consistently maintaining a very high spam detection rate. Customers should be very confident that with Websense they are receiving the best in anti-spam protection.

False Positive Rate (1 in 206,218)

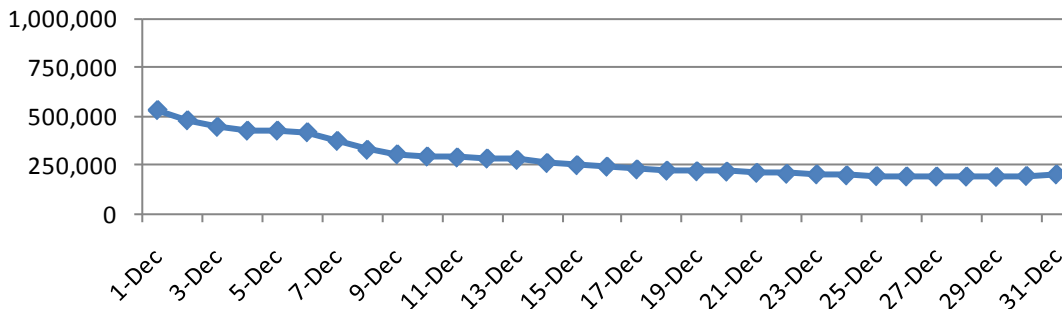


Figure 5 - False Positive Rate (30 Day Rolling Average)

This shows how Websense is consistently maintaining a very low false positive rate. While Websense is catching a high percentage of spam, customers are rarely inhibited by messages falsely landing in a spam queue.

Why Websense Email Security?

- The Websense ThreatSeeker Network provides the intelligence to proactively protect against spam and malware – far ahead of traditional anti-spam and anti-virus alone.
- Today's pervasive blended threats are best matched by integration of best-in-class Websense Web security with email security for Essential Information Protection.