



A Websense® White Paper

Web Security Gateway: Web 2.0 Secured and Simplified

Market Overview

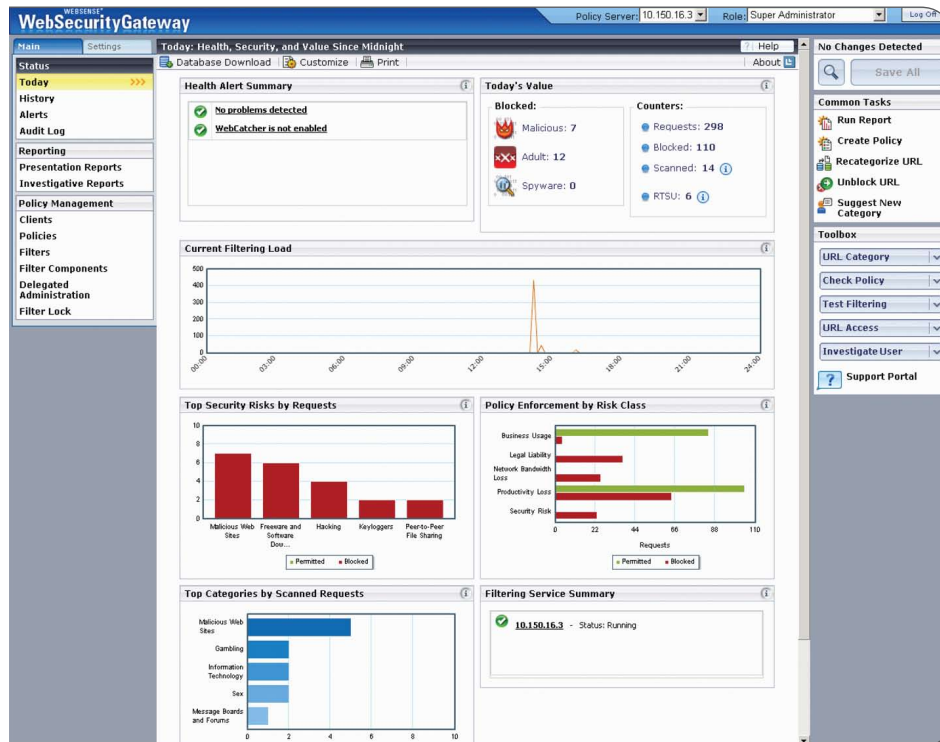
While the use of Web 2.0 products is exploding, its full impact on enterprise security is still not well understood. IT professionals struggle to adopt reasonable policy controls to keep their networks safe from external threats. As new forms of dynamic content such as iGoogle, video sharing sites, blogs, etc. stream into enterprise networks, administrators are looking for solutions to block dangerous or inappropriate content, yet allow employees reasonable and necessary Web 2.0 access to get their jobs done.

Managing today's web threats requires dynamic classification of content; identifying the good and blocking the bad, in real-time. Customers currently using the Websense Web Filter or Web Security solutions can look to migrate to the Web Security Gateway to identify, monitor and manage Web 2.0 content with precision and ease.

Solution Overview

The Websense Web Security Gateway is designed for customers that want to ensure their level of web security increases as the web evolves from a static resource, to a dynamic communication platform. Websense Web Security Gateway builds on the existing level of security offered by Websense Web Security, adding real-time content classification and security scanning coupled with outbound content control.

The Web Security Gateway makes the web safer and more productive for your enterprise by securely enabling Web 2.0, consolidating your existing investment in Websense solutions, and simplifying web management and reporting.



Websense Web Security Gateway Management Console

Securely Enable Web 2.0

Some very popular sites, thought to be safe, distribute many types of threats, making them a launch pad to transmit malware to unsuspecting users. For example, 75% of web sites with malicious code are compromised/legitimate sites, 60% of the top 100 most popular web sites have either hosted or been involved in malicious activity, and 29% of malicious web attacks included data-stealing code.*

The Websense Web Security Gateway is the leading Web security solution to secure against dynamic, Web 2.0 threats and ensure Web content is appropriate and within policy for your organization. The Web Security Gateway provides real-time content inspection and application control for the latest dynamic Web 2.0 content, including SSL traffic, ensuring your IT staff is able to keep up with the latest threats.

- Built-in antivirus, along with sophisticated malware threat protection from Websense means your network is safeguarded at multiple layers ranging from viruses to the ever-increasing threats being exploited through Web 2.0 content.
- Visibility and control over SSL encrypted traffic, allowing administrators complete visibility of network traffic entering and leaving the enterprise.
- Previously unseen web content such as private proxy avoidance servers can now be effectively identified as can users trying to bypass your web security controls. While many of these new types of Internet technologies are in wide use, the ability to secure and control their use is not as widely deployed. Many of the traditional IT security and control technologies simply do not address the risks associated with accessing dynamic content in real time via these new delivery systems.
- Network firewalls provide little protection as Web 2.0 relies primarily on standard HTTP and HTTPS protocols that simply can't be blocked without cutting off Web access.
- Traditional antivirus is limited to inspecting file transfers, and many of the greatest "drive by" threats encountered today are contained in browser scripts that are invisible to AV.
- Web reputation services alone are ineffective as some of the most valuable sites on the Web, such as Google or Yahoo, have fallen victim to hosting malicious code, and simply blocking access to these sites is not an acceptable answer for most businesses.

Develop Acceptable Use Policies For Web 2.0 Sites.

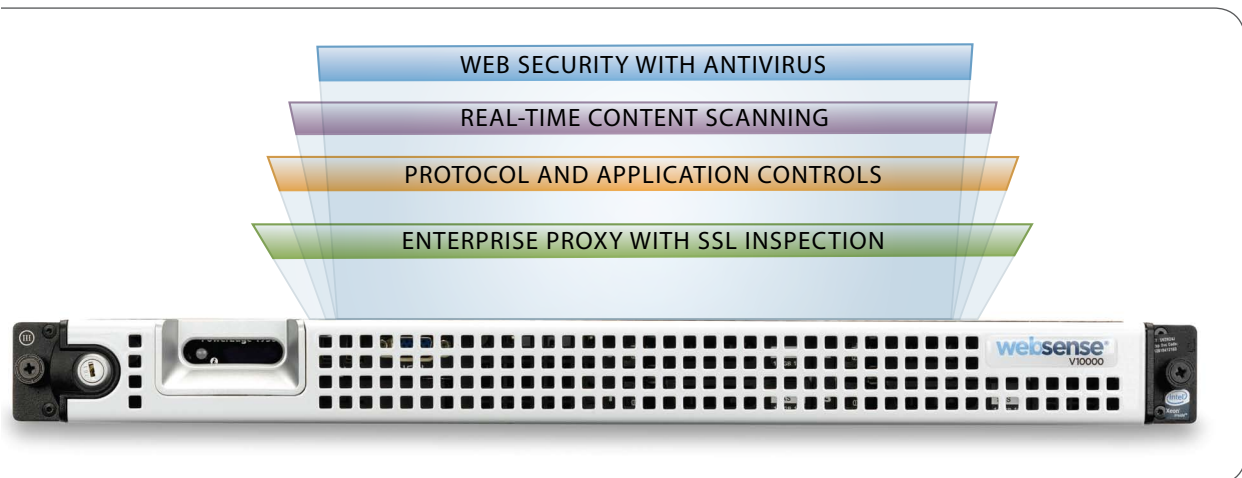
The Websense Web Security Gateway identifies, classifies, and adapts to content trends on a global scale to protect customers and their essential information. Websense provides the most advanced content classification solution working in real-time. With solid visibility into the network, administrators can create use policies that work for both the company and employee.

- Rather than taking a "block all" approach to web security, Websense Security Gateway can create use policies that permit good traffic to cross into your network while blocking components from the same site that are deemed to pose a threat to the security and safety of your network. The granular and real-time content review approach to web security means that corporate compliance and user demands can be met simultaneously.
- Controlling outbound content flow is equally important to maintain a secure network. Using integrated DLP, also available from Websense, you have a single vendor to manage Web 2.0 content and the movement of sensitive data across your network.

Consolidate your Existing Websense Deployment

Another powerful benefit of Web Security Gateway is its compact size and consolidation of technologies into an extensible appliance. The V10000 appliance combines multiple Websense services onto a single platform. This reduces the number of servers, rack space and power needed to deploy and manage your Websense security implementation.

- The Web Security Gateway integrates the Websense web proxy into a single appliance providing visibility and control of all types of web traffic, including SSL. Web filtering solutions can leverage the integrated web proxy/cache allowing administrators to maintain a single solution to monitor private channels and satisfy business users with optimal performance of their web activities.
- Whereas Websense Web Filter and Web Security solutions can integrate directly with these network components, and use them to re-direct web traffic, the Web Security Gateway uses its integrated proxy capabilities built in to the product to analyze the web content traversing the network. The Web Security Gateway effectively captures all web traffic, co-existing with existing network infrastructure components such as a firewall, router etc.
- Websense Web Security Gateway also helps you consolidate other expensive, legacy architecture (i.e., third-party proxy solutions) with a single web management solution.



Websense V10000 Appliance

Simplify Management and Reporting

No web security solution is complete without a comprehensive management dashboard. The single console delivered in the Web Security Gateway aggregates data on web security events into comprehensive summary and customized reports. Reports can easily be generated to show categories of malicious URLs or categories of specific threats, all from a single interface and in real time.

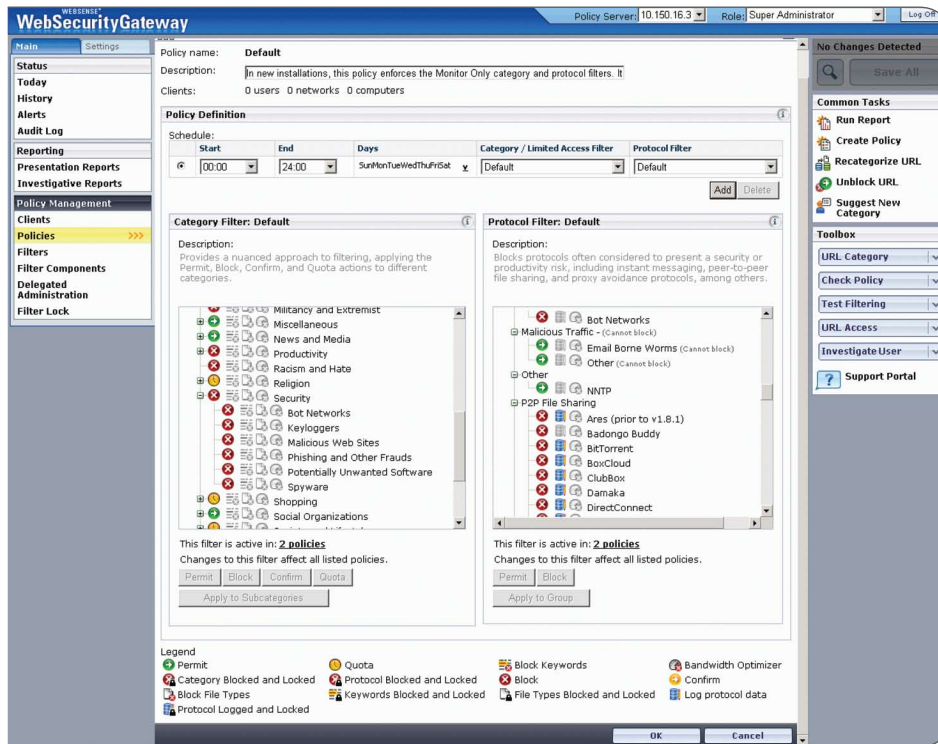
- With the new task-based dashboard of Web Security Gateway, administrators can drill down into security events to view more details behind each of the statistics. The time to resolve or investigate security incidents is reduced as administrators can pinpoint problem areas with a single view. Administrators can take immediate action on any threat, especially dynamic threats caused as a result of Web 2.0 content. Web Security Gateway allows IT to go well beyond traditional page blocking to address sections of content within the same page. The difference in this capability is compelling because the “all or nothing” approach to managing web access is eliminated.

- 55 built-in reports can easily be automated for generation and distribution to key stakeholders to track all aspects of your web security and blocking activity.

Maximize your Websense Investment

The Websense Web Security Gateway is an integrated solution providing greater functionality and controls than found with typical proxy and firewall solutions. To keep pace with the current threats from dynamic content IT staffs desire advanced application controls.

- The Web Security Gateway provides over 125 controls to manage thousands of web applications, including IM and P2P, ensuring that your network can be managed and secured against today's latest technologies. With only a check of a box, you can instantly control what applications can communicate over your network.
- Updates for new or updated applications are automatic, keeping networks safe against today's threats. This means no additional time is required to stay up to date and no additional IT resources are consumed trying to anticipate changes to applications.



Websense Policy Configuration

The following table provides the key features of the Web Security Gateway at a glance as compared to the Websense Web Filter and Web Security products.

Feature	Web Filter	Web Security	Web Security Gateway
High-performance Appliance Platform			●*
Consolidated System Components			●*
Built-in Platform Extensibility			●*
Real-time Security Scanning			●
Real-time Content Classification			●
Enterprise Proxy and Cache			●
On Board Antivirus			●
Web Reputation Services		●	●
Real-time Security Updates		●	●
Leading Web Security Database		●	●
Centralized Management and Reporting	●	●	●
Easy-to-use, Web-based Management	●	●	●
Advanced Application Controls	●	●	●
Leading Web Filtering Database	●	●	●
Scalable Solution Architecture	●	●	●

* When deployed on the V10000 appliance

Summary

Demonstrating compliance with corporate security policy is a constant challenge and expense for any organization. Websense Web Security Gateway can help make that task easier and less costly, while maximizing security and better managing productivity in a Web 2.0 world. Additionally, the optional integrated DLP solution empowers you to reduce risk of data loss and ensure regulatory compliance.

Only the Websense Security Gateway can consolidate and maximize the current investment of Websense customers by providing crucial visibility and control of dynamic Web 2.0 content. Websense customers will gain greater visibility and control of web applications, identify and control all forms of content, satisfy compliance mandates, and reduce the overall cost of managing web applications.

The Websense Web Security Gateway is available as an upgrade for Web Filter and Web Security customers. For more information on the Websense Web Security Gateway, visit www.websense.com/v10000.